

BAL HARBOUR
VILLAGE
PARK

DESIGN WORKSHOP 2

03.05.2018

ZYSCOVICH
ARCHITECTS

NOTES MEETING 01/29/2018

high design, low active

- access into water (kayak, canoe) • launch
 - ↳ defense against rising water
- unique shading - tension structures
- bldg w/ glass - full court w/ gym, social area, gymnastics area, cafe - All under roof.
- Recreation center • indoor lap pool / kiddie pool
- vita course / yoga
- canopy w/ ventilation
- bigger bldg. high as possible w/o wasting all green
- park for all ages ^{or} older kids
- Reef access not a good idea in regards to barrier b/ bldg next door ex: sound travel
- Outdoor art programs, films
- keep open as possible & not over build
 - places to walk around
 - open shed

1

- Activity Rms - Multi Use
- Sculpture garden Park in D.C. (example)
 - coffee shop / catering kitchen
- small amphitheater / raised plazas
 - ↳ movie screenings, concerts,
- ask ourselves what we do & do not have
 - ↳ Not enough green space
 - ↳ less is more
- Dedicate a large part of park to the children
- tree playhouse - Plant trees
- Combo for children & adults - integrate
- create iconic locations that boost the arts
- combine w/ park across the street (96th st.)
- Splash pad / water activities
- tennis court / croquet court
- less concrete structure
- covered lap pool indoors

2

- Multipurpose: Day/Night, Old / Young
- Indoor / Outdoor Space (Multipurpose)
 - Richmond green roof ref.
 - playground & courts closer to 96th st. & passive park in the middle.
 - consider hotels in terms of noise
 - party space indoors - No amplified music
 - separate playgrounds by age
 - coffee shop
 - Water taxi
 - Outdoor space like the PAMM - places for people to lounge & relax
 - place to involve the arts more & sculpture
 - Against renting space to public
 - How do we create a community
 - electric at night = love the lights.
 - Move bldg to where parking is.

3

private / public partnership ^{ie:} (where are instructors coming from?)

- noise & proximity
- making community = something for everyone
- different times of uses for all types of users.
- taller bldg = desirable

4

Multi level facility

Noise Separation from Residents

Outdoor Social Space

Keep space open & Simple Less Concrete

Multi Use Space / Coffee Shop

Outdoor event hosting space

5

Building should separate village

Focus on space for local youth

Include Splash Pad

Indoor Lap Pool

Survey on Key Points

Indoor / Outdoor Space Important

Green Roof

6

EXISTING CONDITIONS



SITE PLAN-A

TOTAL AREA 6,587 SF

GROUND FLOOR A/C SPACE 4,500 SF

- 1-KIDS PLAYGROUND
- 2-SPLASH PAD/FOUNTAINS
- 3-PASSIVE ACTIVITIES
- 4-EXERCISE PATH
- 5-WATER TAXI / KAYAK LAUNCH
- 6-BOARDWALK / WATERFRONT
- 7-VISITORS PARKING
- 8-EXISTING UTILITIES TO REMAIN
- 9-RECREATION CENTER
- 10-COVERED WALKWAY AND TERRACES
- 11-ACCESS/CONTROL
- 12-POSSIBLE ENTRANCE FROM SECURITY DISTRICT
- 13-FURNITURE
- 14-HARDSCAPE MULTIPURPOSE
- 15-BASKETBAL COURT

10% GREEN AREA/HARDSCAPE
LOST IN COMPARISON TO OPTION C



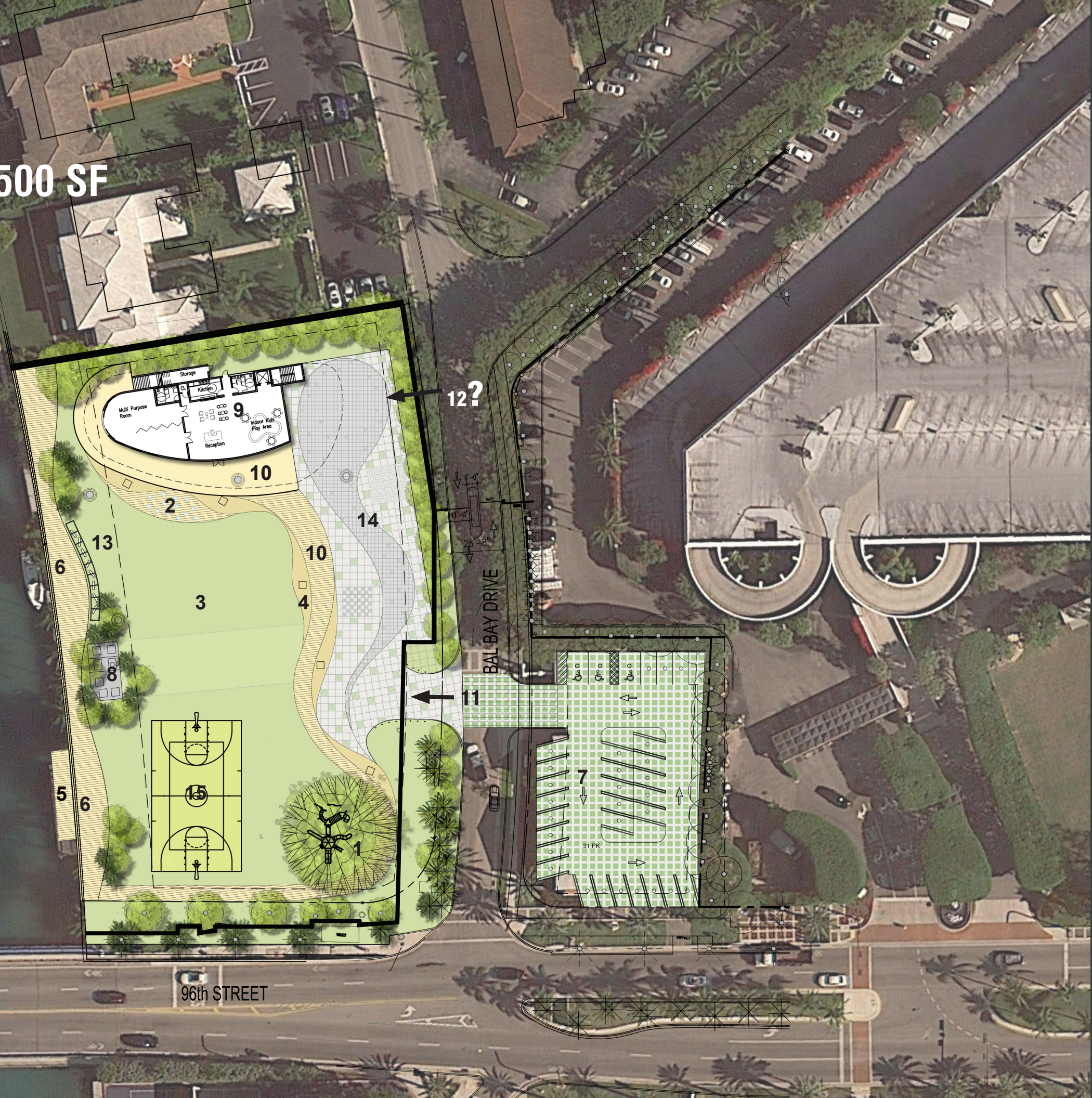
SITE PLAN-B

TOTAL AREA 6,587 SF

GROUND FLOOR A/C SPACE 4,500 SF

- 1-KIDS PLAYGROUND
- 2-SPLASH PAD/FOUNTAINS
- 3-PASSIVE ACTIVITIES
- 4-EXERCISE PATH
- 5-WATER TAXI / KAYAK LAUNCH
- 6-BOARDWALK / WATERFRONT
- 7-VISITORS PARKING
- 8-EXISTING UTILITIES TO REMAIN
- 9-RECREATION CENTER
- 10-COVERED WALKWAY AND TERRACES
- 11-ACCESS/CONTROL
- 12-POSSIBLE ENTRANCE FROM SECURITY DISTRICT
- 13-FURNITURE
- 14-HARDSCAPE MULTIPURPOSE
- 15-BASKETBALL COURT

15% GREEN AREA LOST IN
COMPARISON TO OPTION C



GROUND FLOOR A/C SPACE 4,500 SF

- 1-KIDS PLAYGROUND
- 2-SPLASH PAD/FOUNTAINS
- 3-PASSIVE ACTIVITIES
- 4-EXERCISE PATH
- 5-WATER TAXI / KAYAK LAUNCH
- 6-BOARDWALK / WATERFRONT
- 7-COVERED VISITORS PARKING
- 8-EXISTING UTILITIES TO REMAIN
- 9-RECREATION CENTER
- 10-COVERED WALKWAY AND TERRACES
- 11-ACCESS/CONTROL
- 12-POSSIBLE ENTRANCE FROM
SECURITY DISTRICT
- 13-FURNITURE
- 14-HARDSCAPE MULTIPURPOSE
- 15-TEMPORARY EVENT CANOPY

MAX. GREEN AREA AMONG OPTIONS
TOTAL OF 35,520 SF

SITE PLAN C

SECOND FLOOR A/C SPACE 1,922 SF

- 1-MULTIPURPOSE ROOM
- 2-OFFICES
- 3-BREAK AREA
- 4-OUTDOOR TERRACE
- 5-BASKETBALL COURT



96th STREET

BAL BAY DRIVE

4

5

Multi Purpose Rm

Offices

Break Area

Office

Office

Office

Office

Office

Office

Office

Office

Office

Office

Office

Office

Office

Office

Office

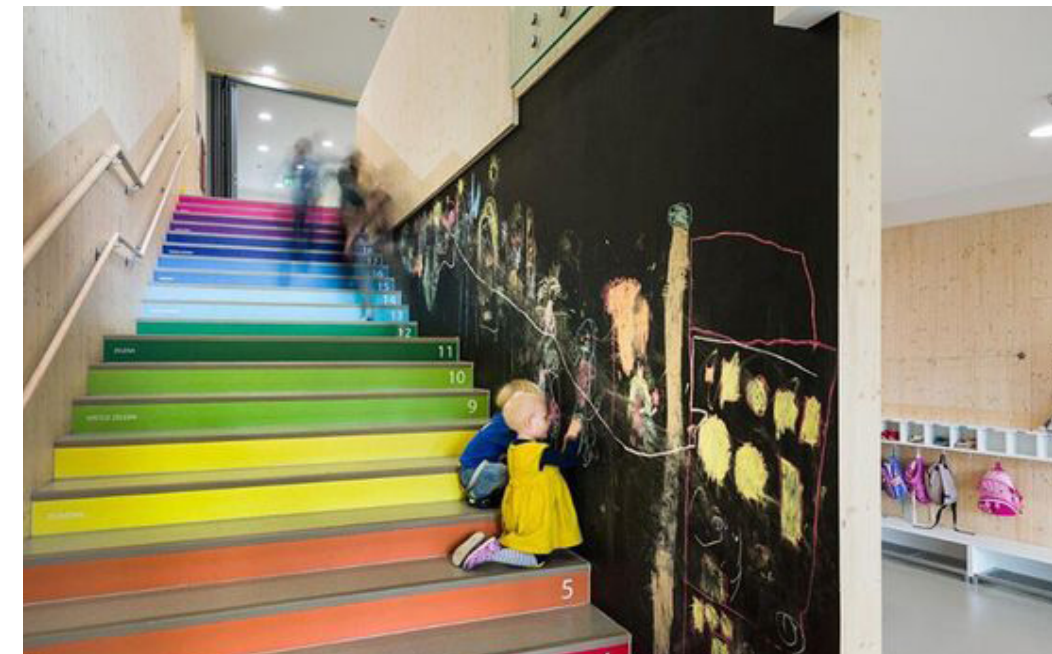
PLAYGROUND

SMALL CHILDREN INDOOR/OUTDOORS



PLAYGROUND

SMALL CHILDREN INDOORS



PLAYGROUND

CHILDREN OUTDOORS



PLAYGROUND

CHILDREN OUTDOORS



PASSIVE ACTIVITIES



PASSIVE ACTIVITIES

SPLASH PAD



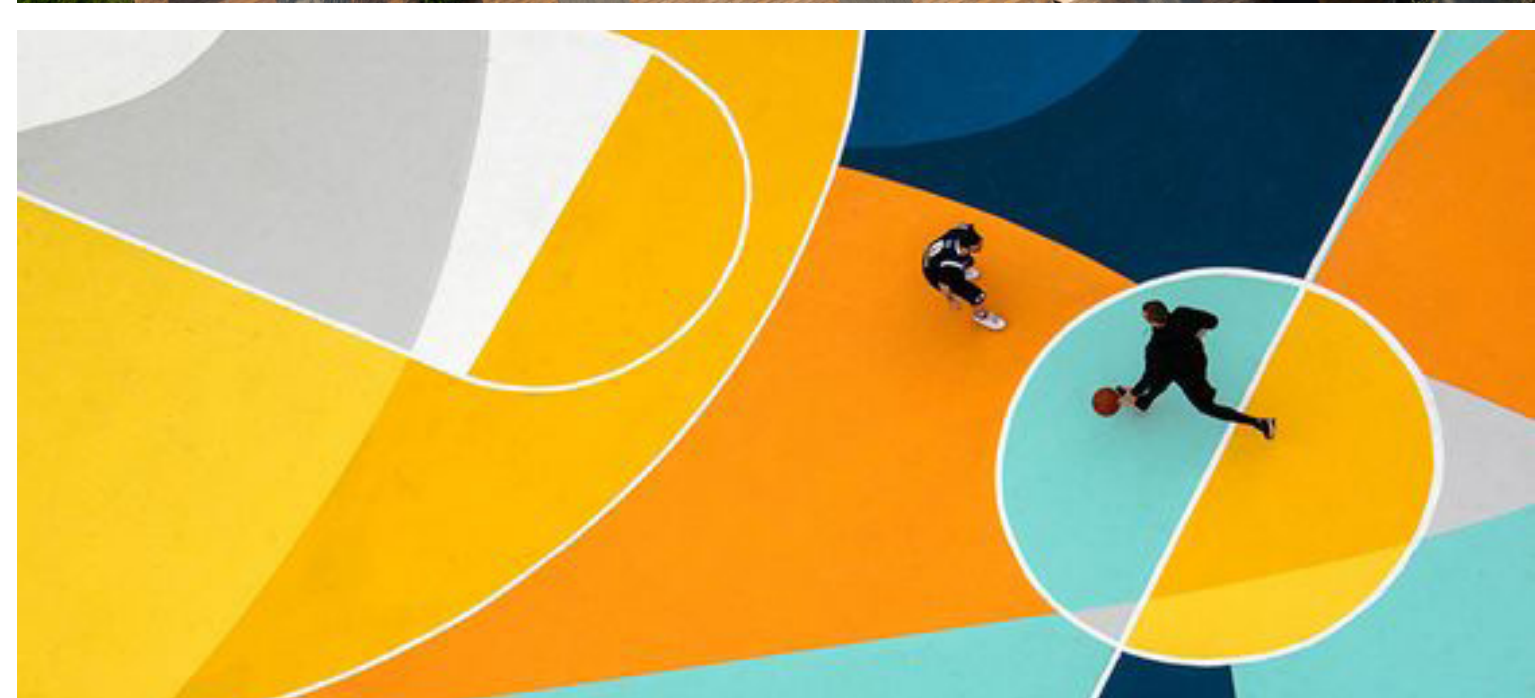
PASSIVE ACTIVITIES

COVERED WALKWAYS



PASSIVE ACTIVITIES

HARDSCAPE



PASSIVE ACTIVITIES

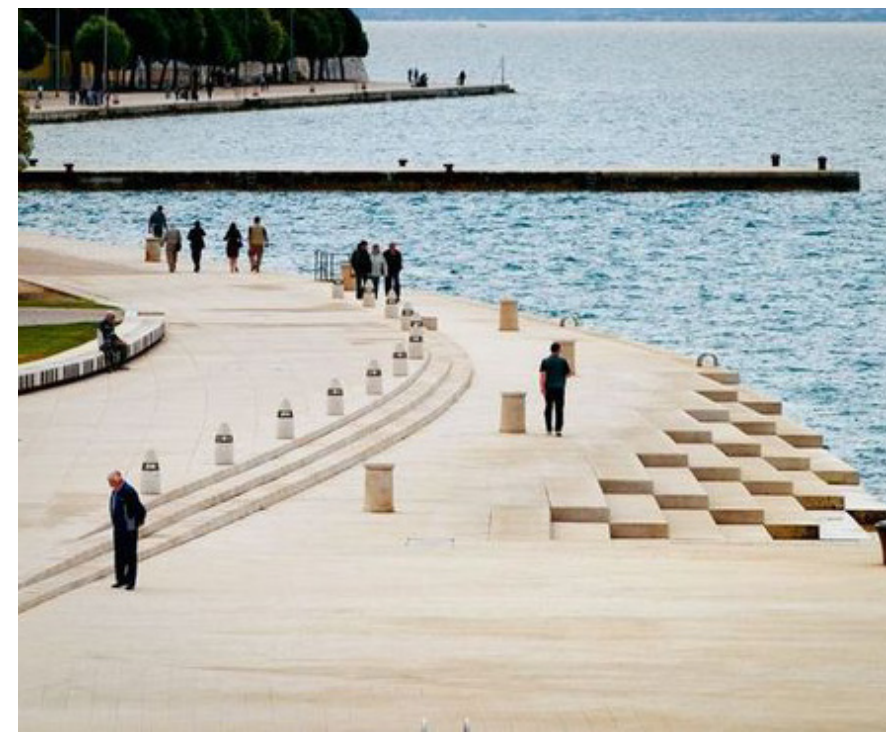
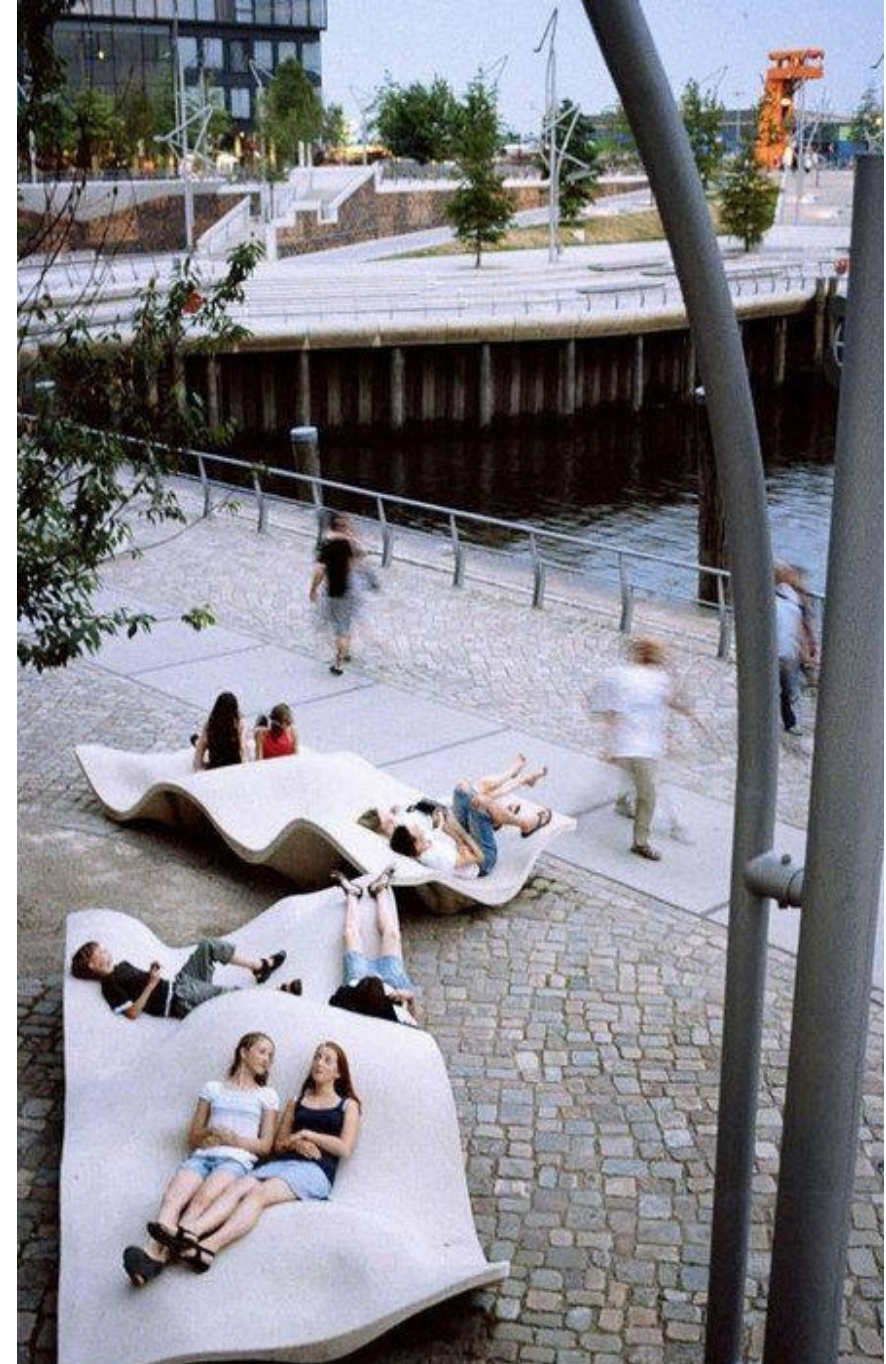
EVENTS



WATERFRONT



WATERFRONT



WATERFRONT



WATERFRONT

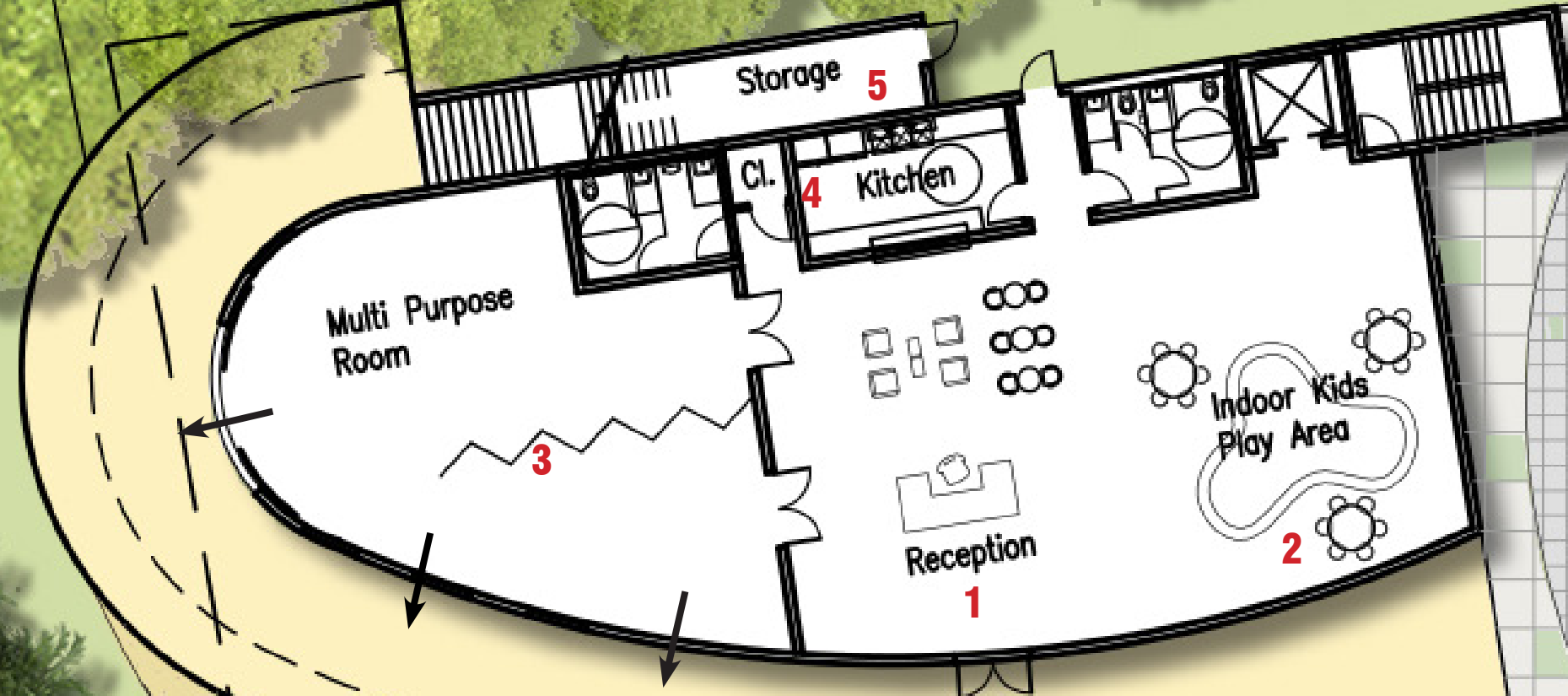
EXTEND BOARDWALK/DOCK PAST EXISTING BULKHEAD

2



RECREATION CENTER

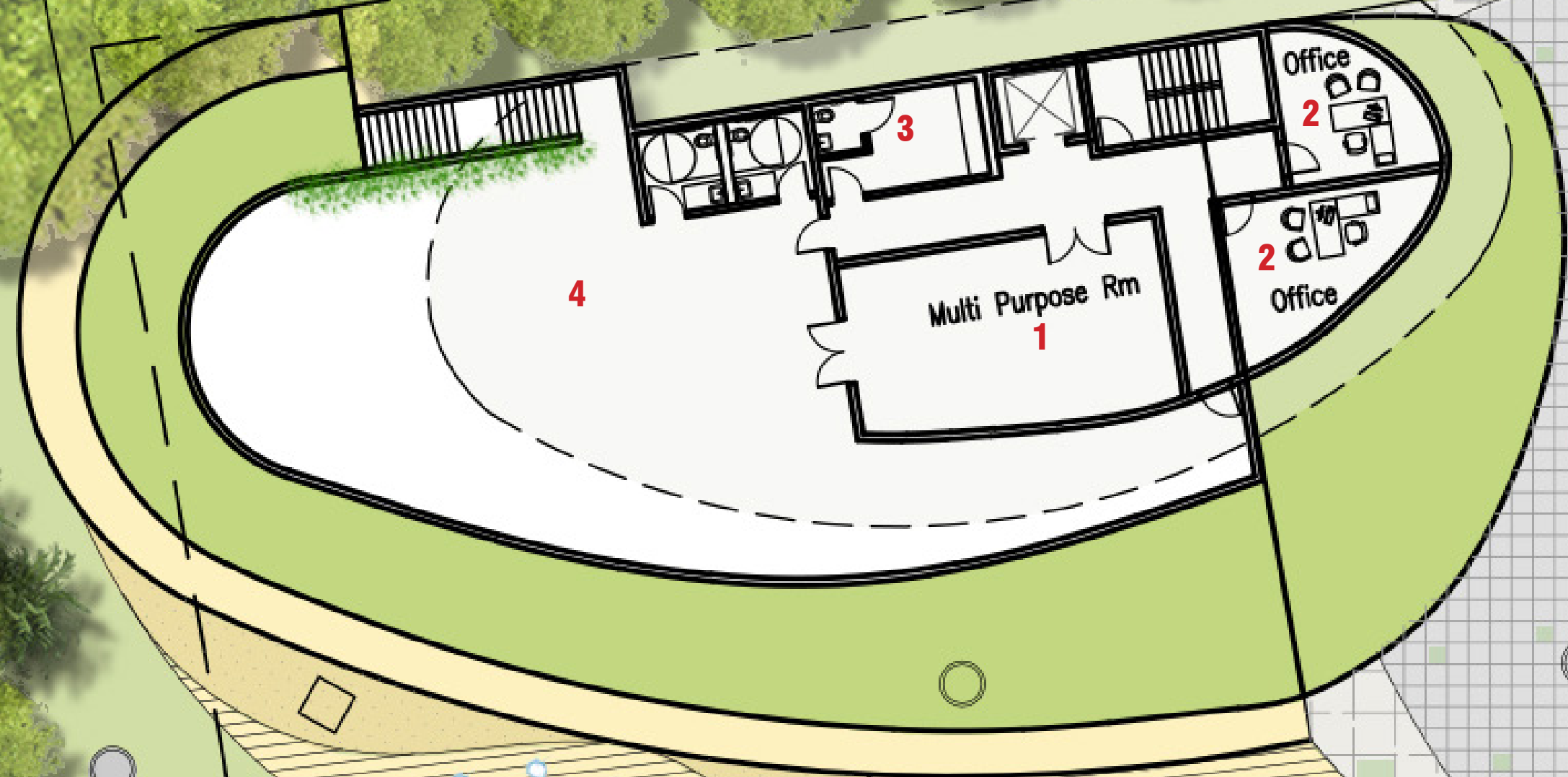
GROUND FLOOR A/C SPACE 4500 SF



- 1-RECEPTION
- 2-INDOOR KIDS PLAY AREA
- 3-MULTIPURPOSE ROOMS, 1382 SF
- 4-KITCHEN
- 5-STORAGE
- 6-SPLASH PAD
- 7-COVERED TERRACE

RECREATION CENTER

SECOND FLOOR A/C SPACE 2087 SF



- 1-MULTIPURPOSE ROOM, 610 SF
- 2-OFFICES
- 3-BREAK ROOM STAFF
- 4-OUTDOOR TERRACE 2550 SF

RECREATION CENTER

FLEXIBLE SPACES



RENDERING AERIAL-A



RENDERING AERIAL-C



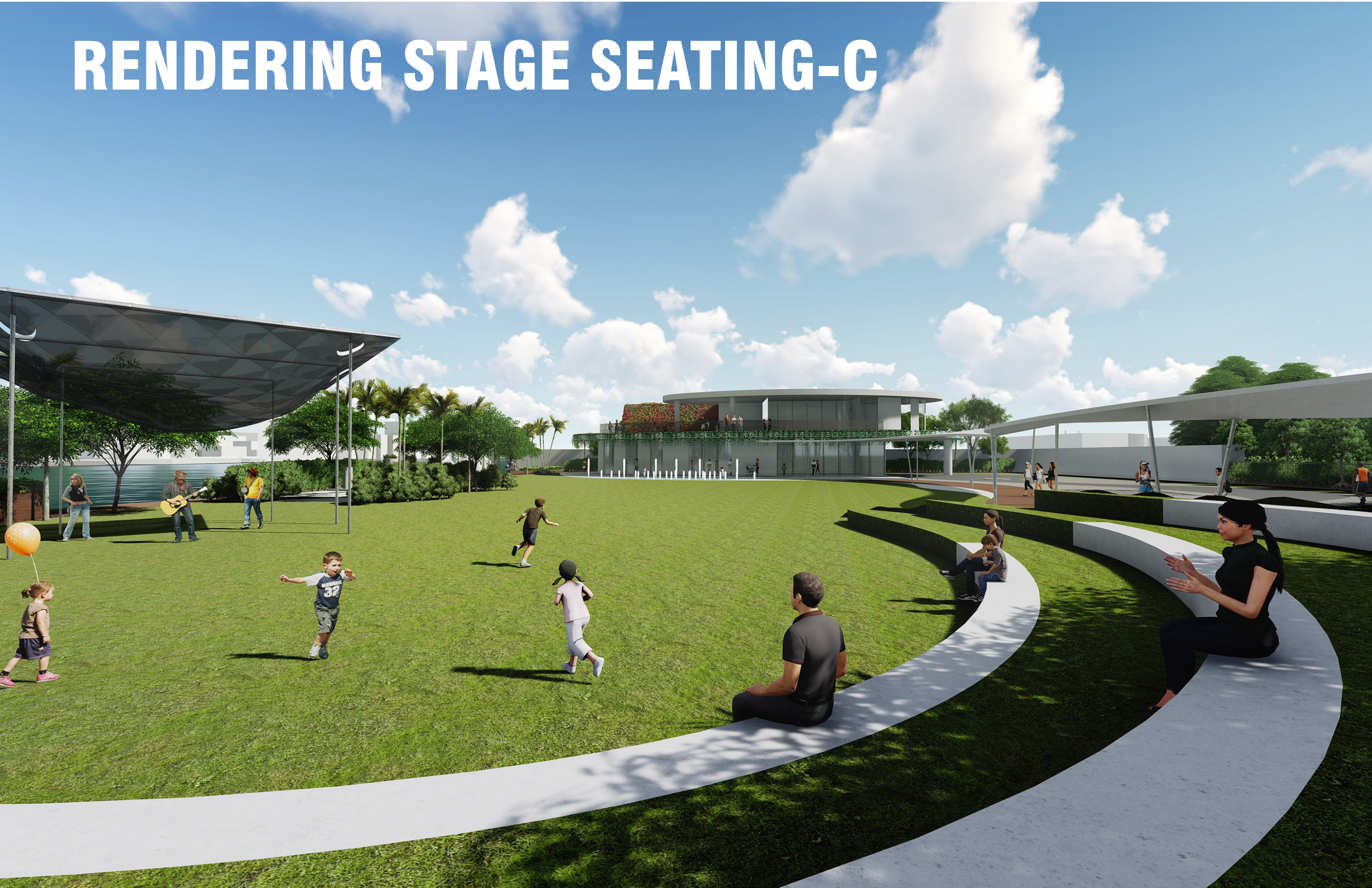
RENDERING REC CENTER



RENDERING COVERED WALKWAY-C



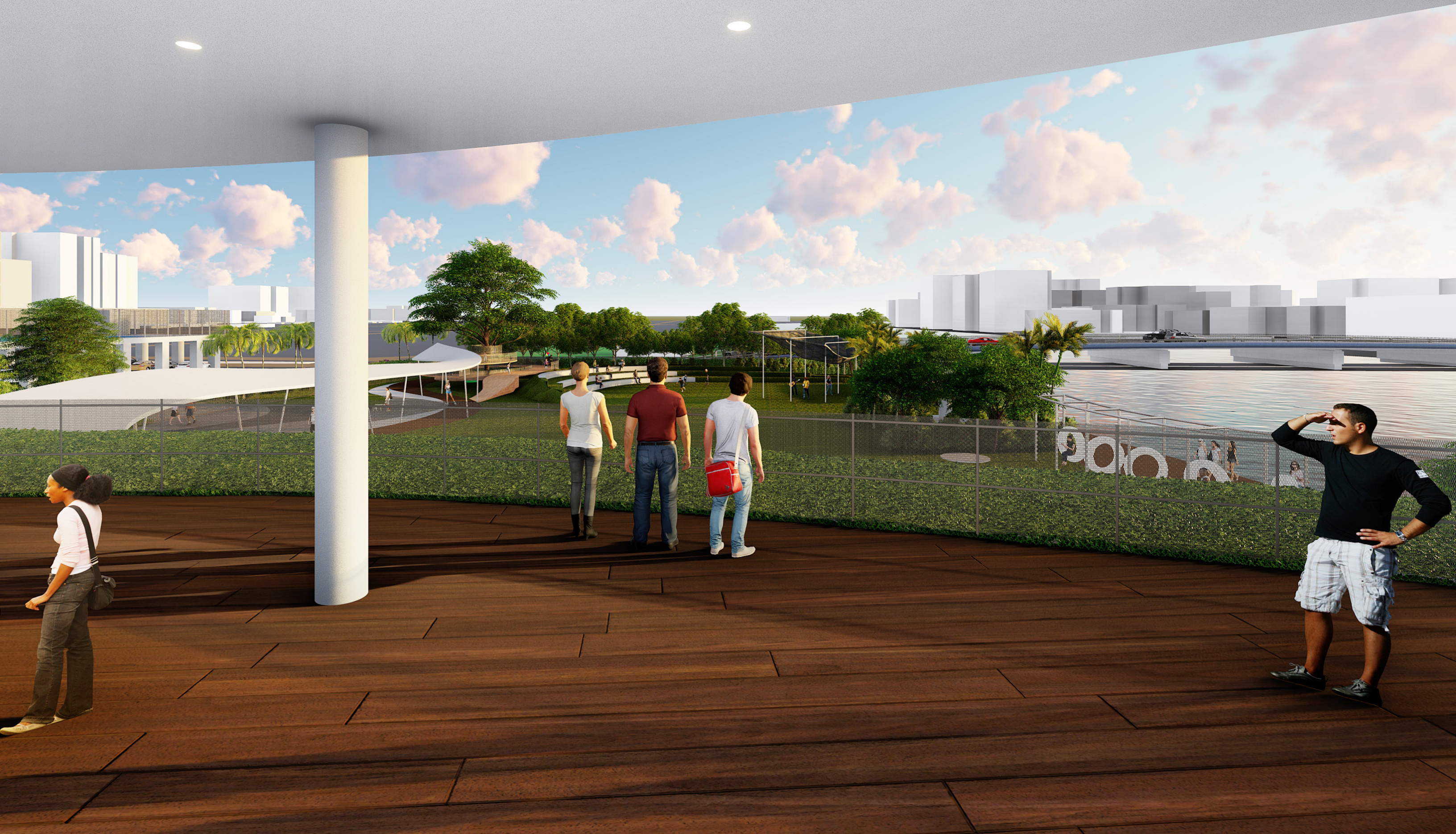
RENDERING STAGE SEATING-C



RENDERING NO STAGE-C



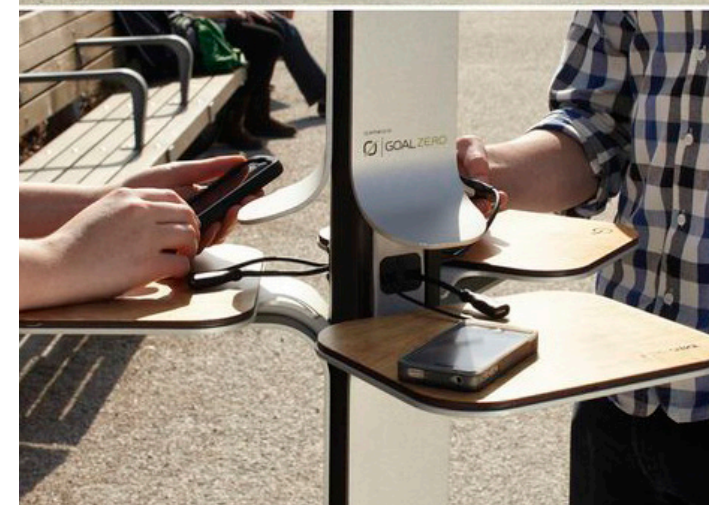
RENDERING SECOND FLOOR OUTDOOR TERRACE-C



LIGHT/TECHNOLOGY



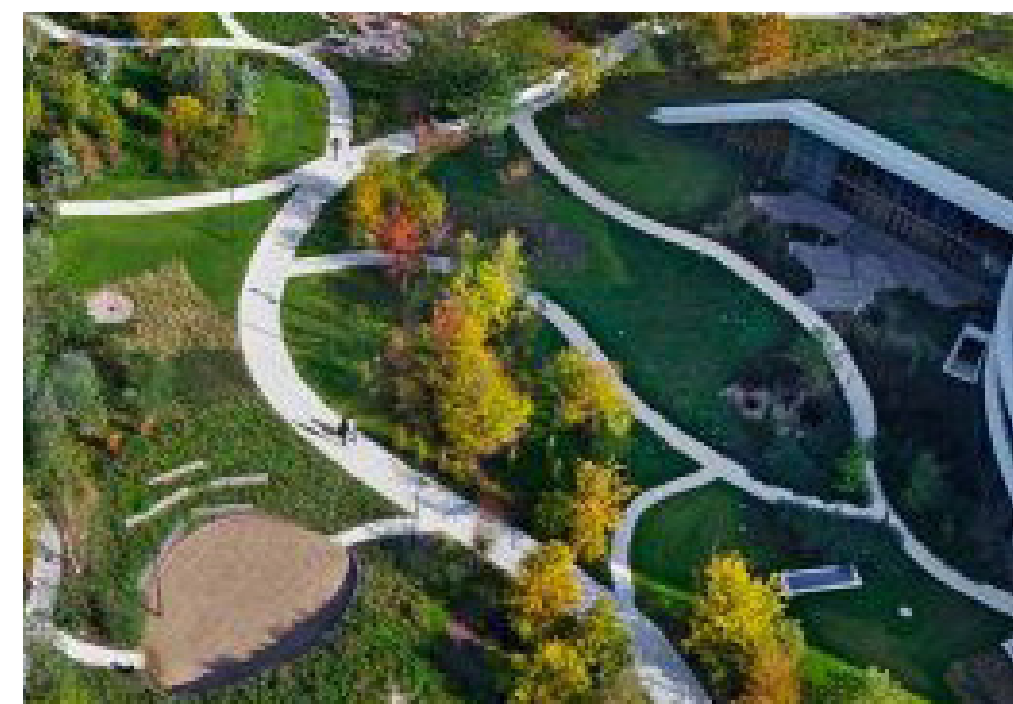
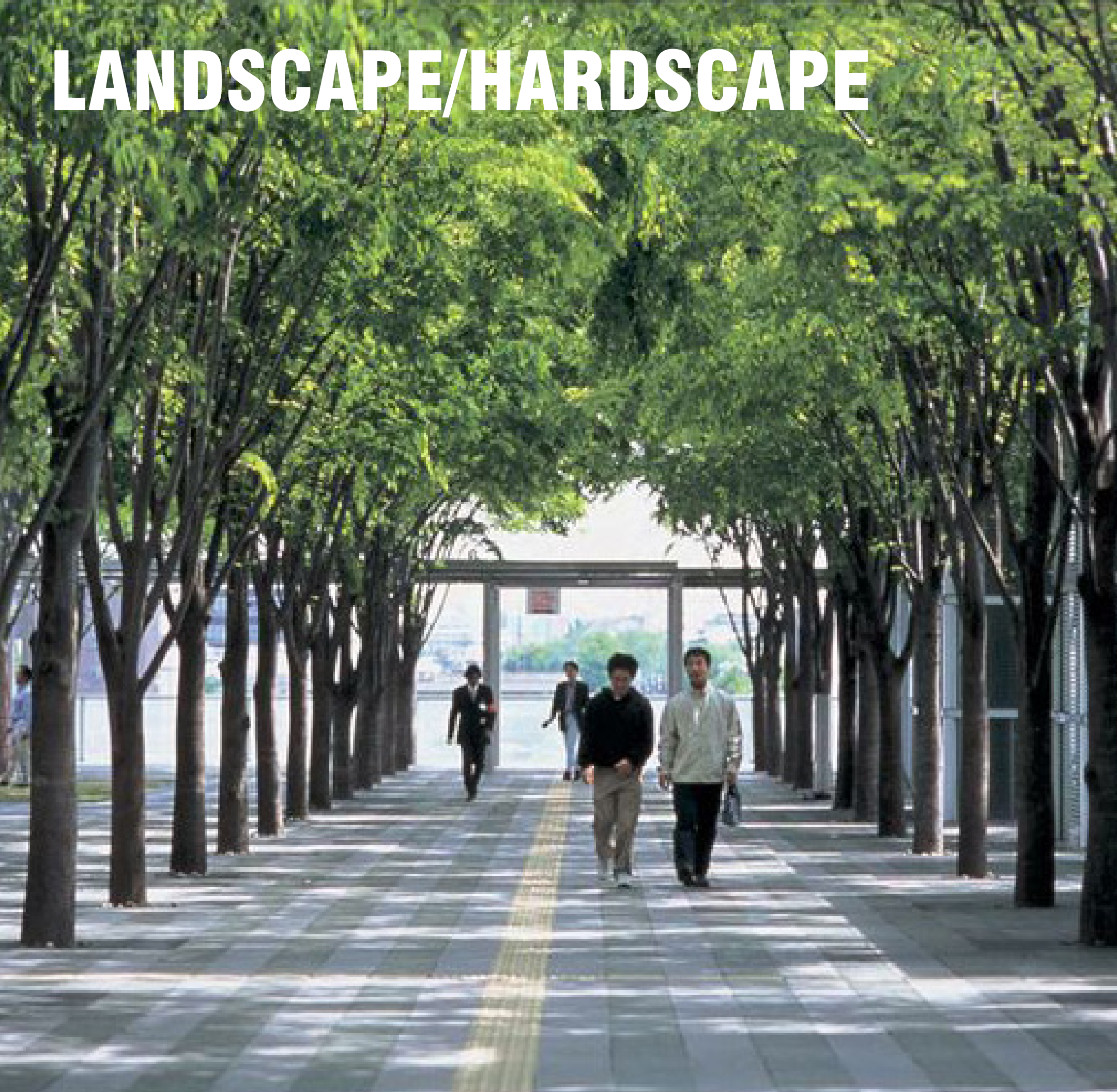
LIGHT/TECHNOLOGY



FURNITURE



LANDSCAPE/HARDSCAPE



LANDSCAPE



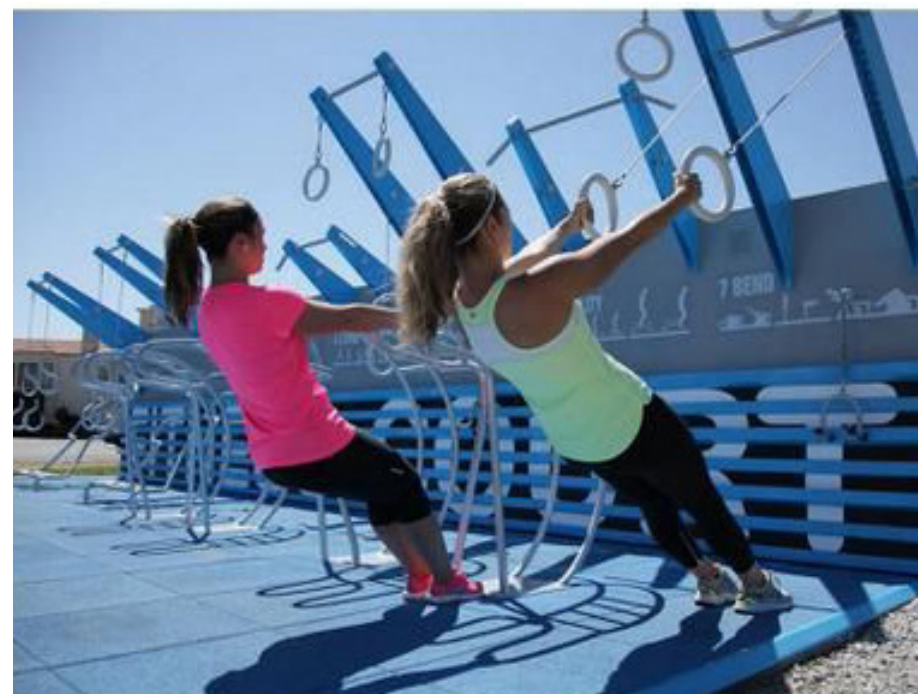
SPORTS/ PLAYGROUND

ADULT PLAYGROUND



SPORTS/ PLAYGROUND

OUTDOOR EXERCISE

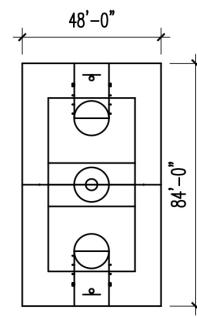


SITE PLAN PHASE 1

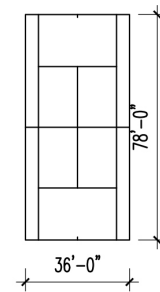




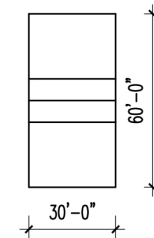
1.



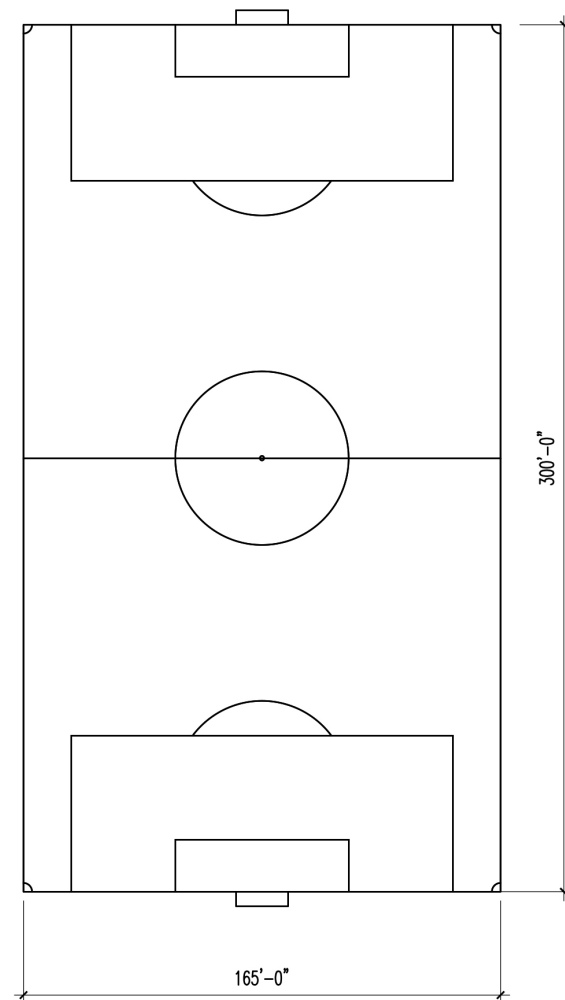
2.



3.



4.



1.BASKETBALL



2.TENNIS



3.VOLLEYBALL



4.SOCCER



SPORTS/ PLAYGROUND

COVERED VS NOT COVERED SPORTS COURTS

