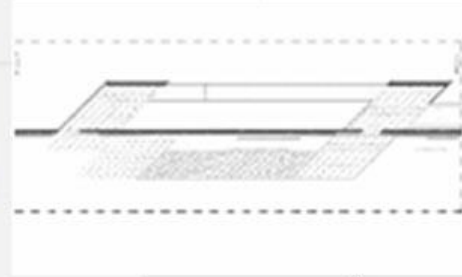
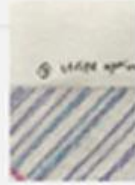
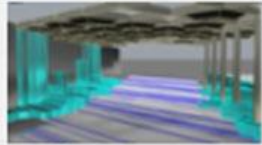


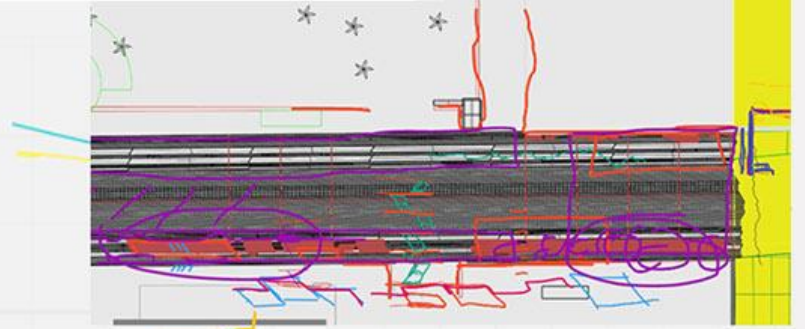
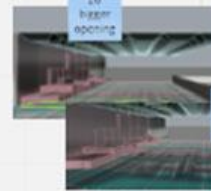
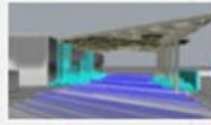
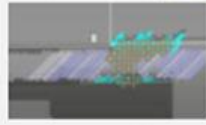
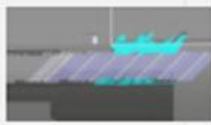
BAL HARBOUR 96th STREET ENTRY

Vison Plan Submission: April 23, 2020

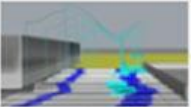
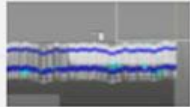




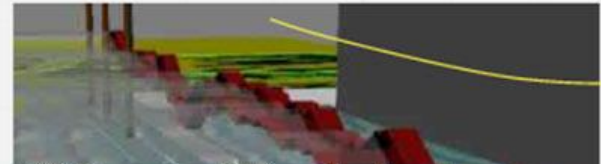
W 1



W 3



1c with planter



Pages



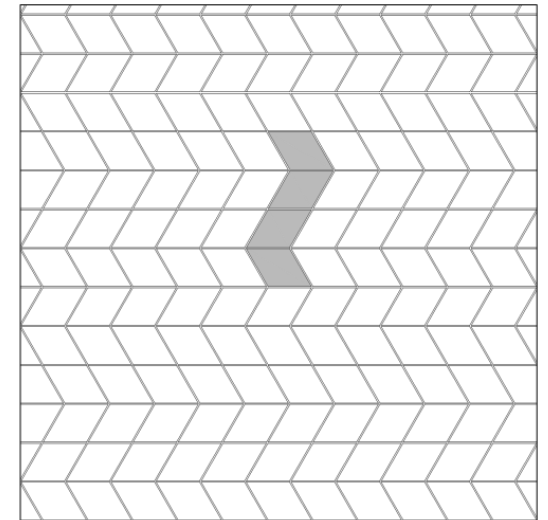
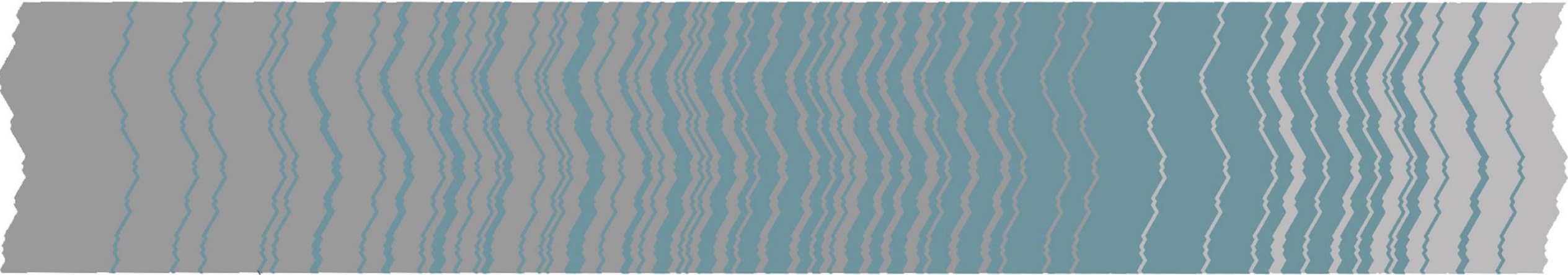
beach



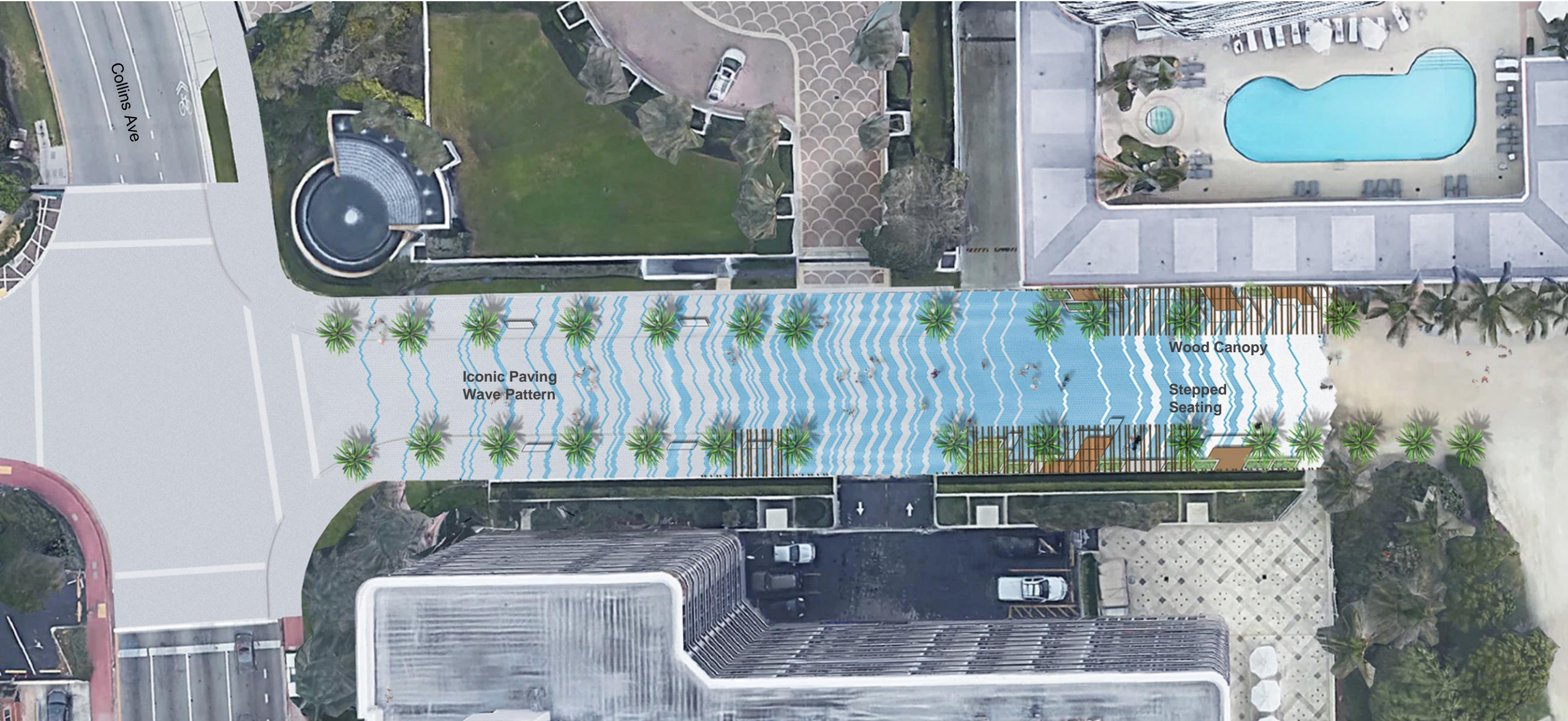


BAL HARBOUR





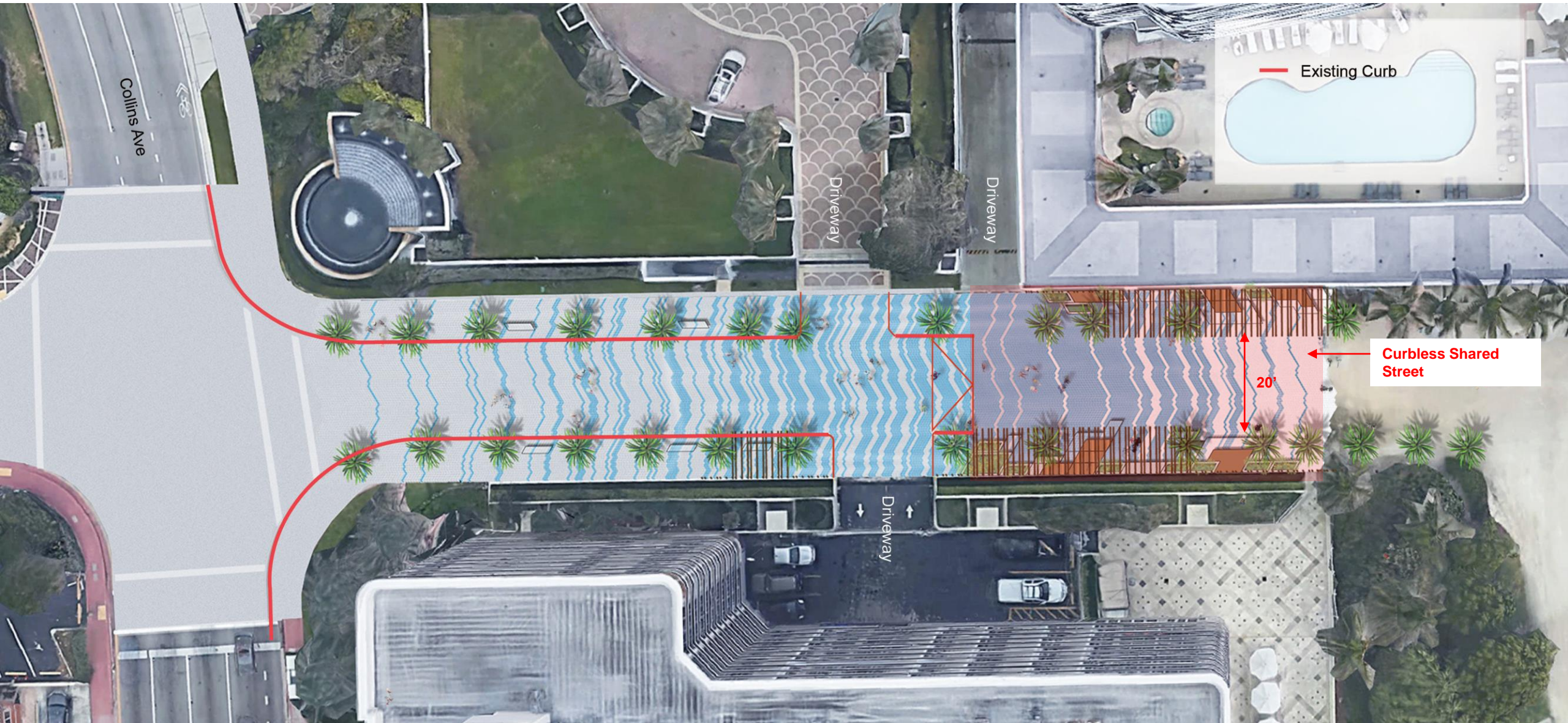




Iconic Paving
Wave Pattern

Wood Canopy

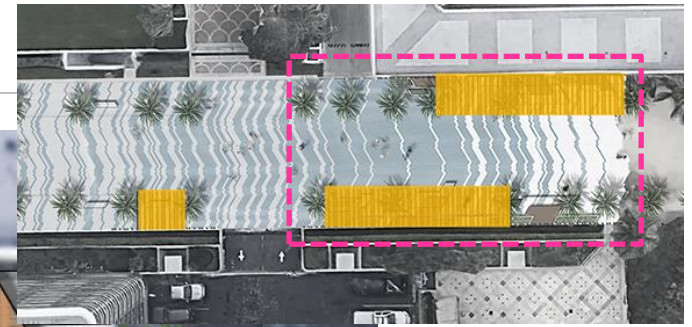
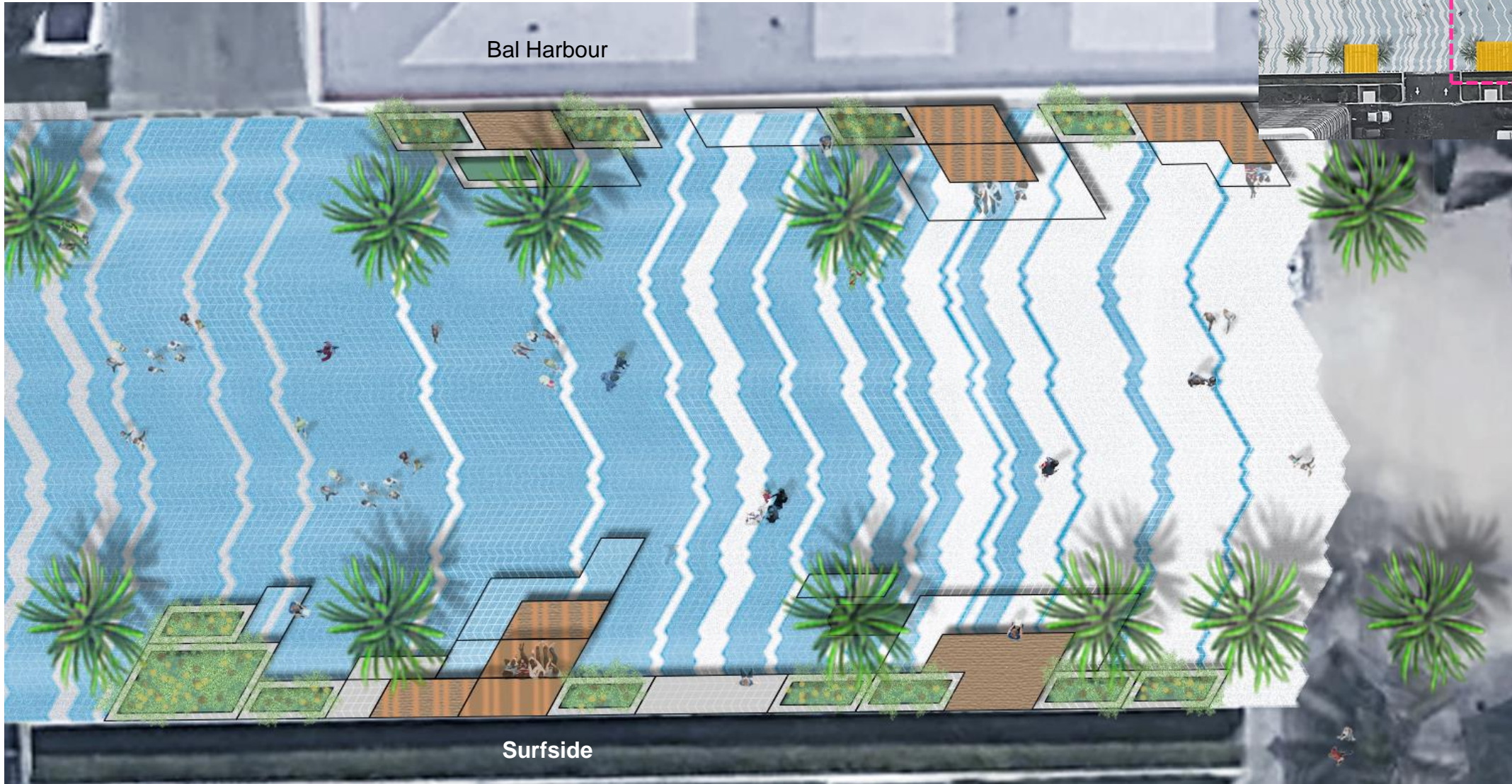
Stepped
Seating



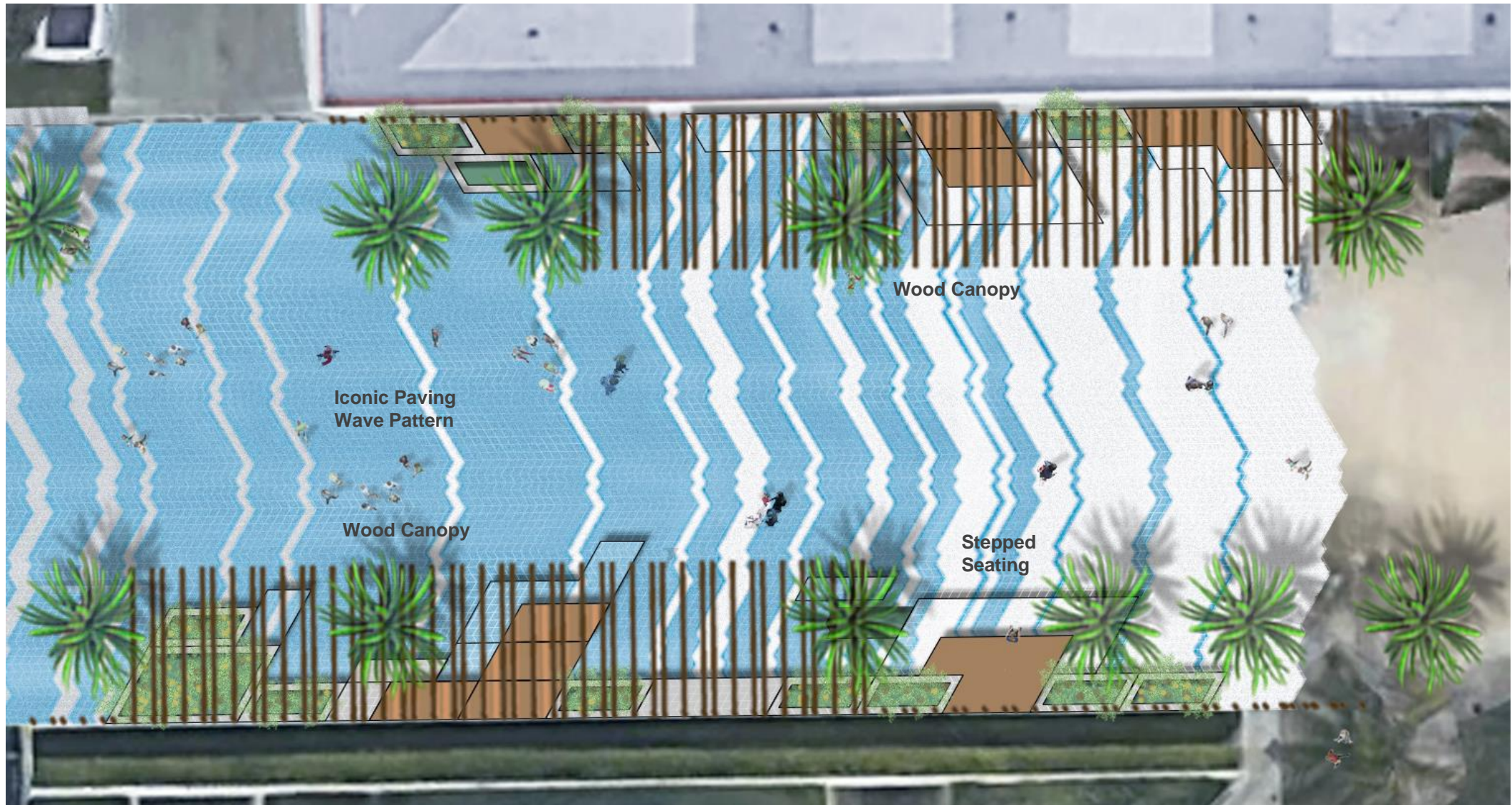




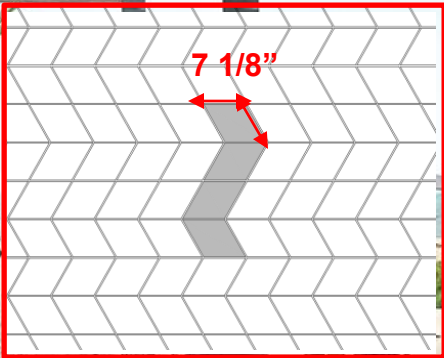








4" T VEHICULAR RATED
CONCRETE PATER,
CUSTOM SHAPE AND
COLOR



WOOD CANOPY WITH
PLUG IN LIGHTS FOR
SPECIAL EVENTS

16'H

WOOD STEPPED SEATING

CONCRETE MASONRY
STEPPED SEATING

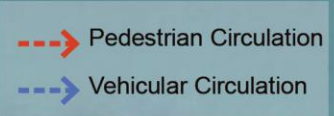
CONCRETE RAISED
PLANTER

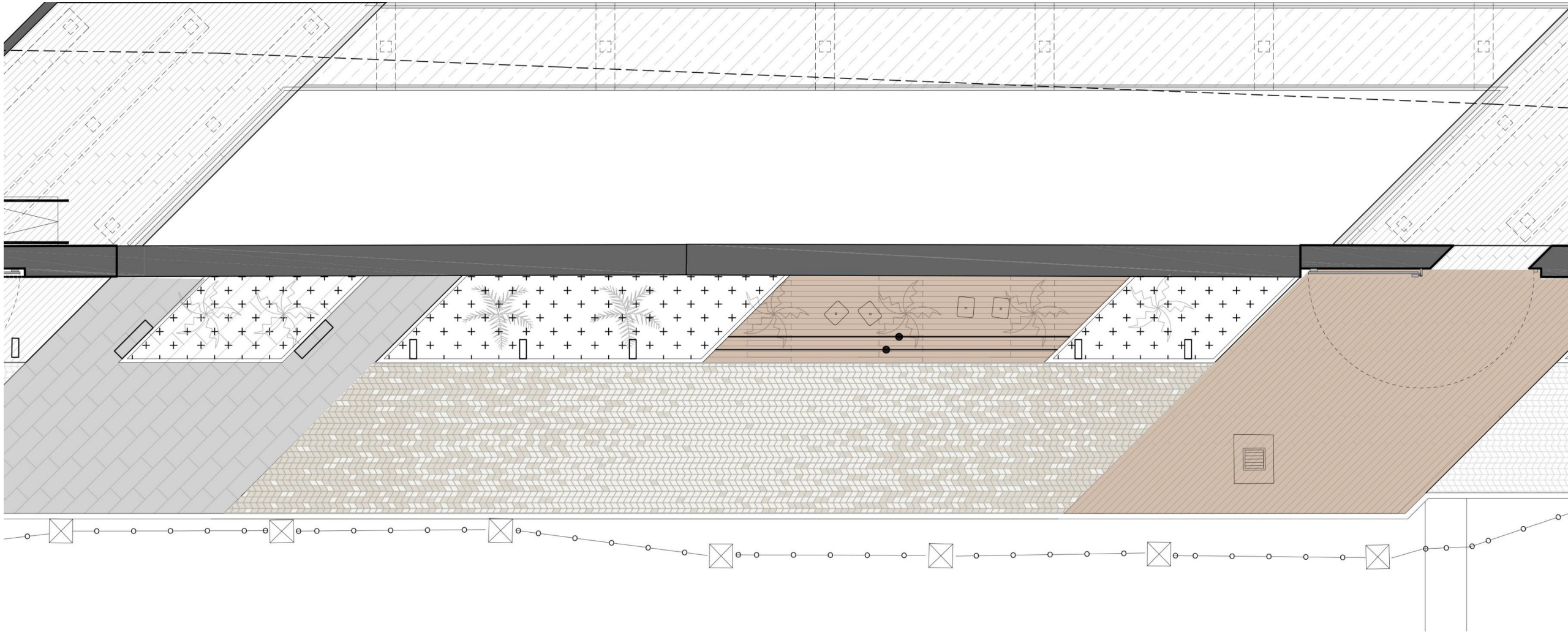


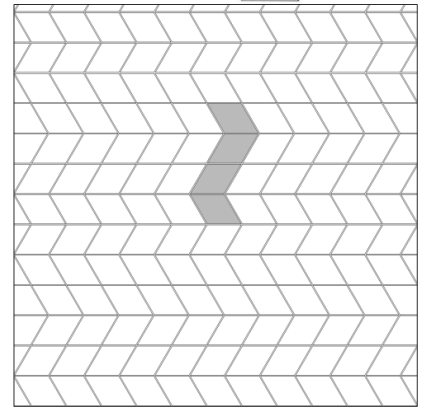
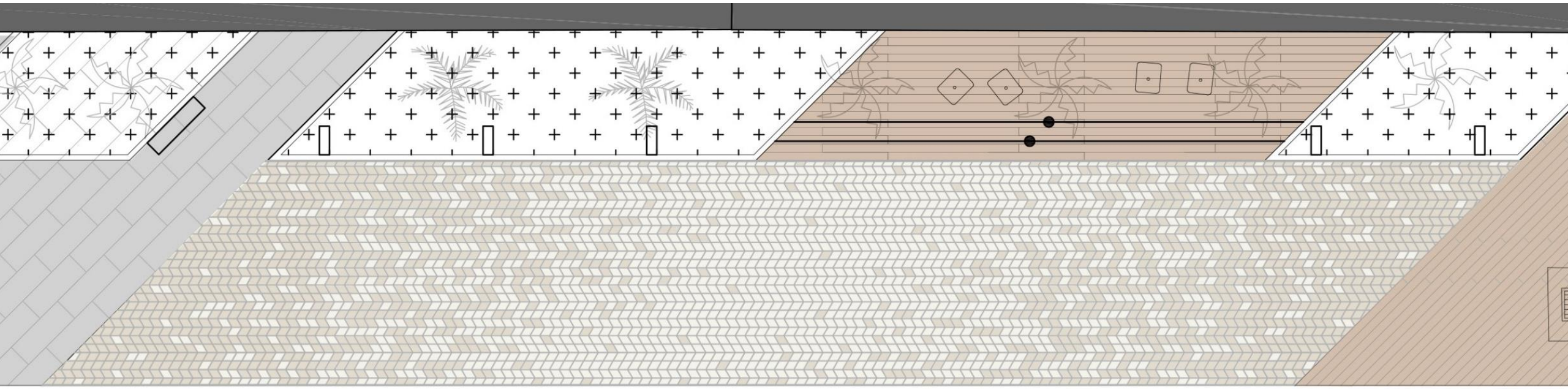


BAL HARBOUR ENTRY GARDEN
HERMAN FULTZ PARKING AREA

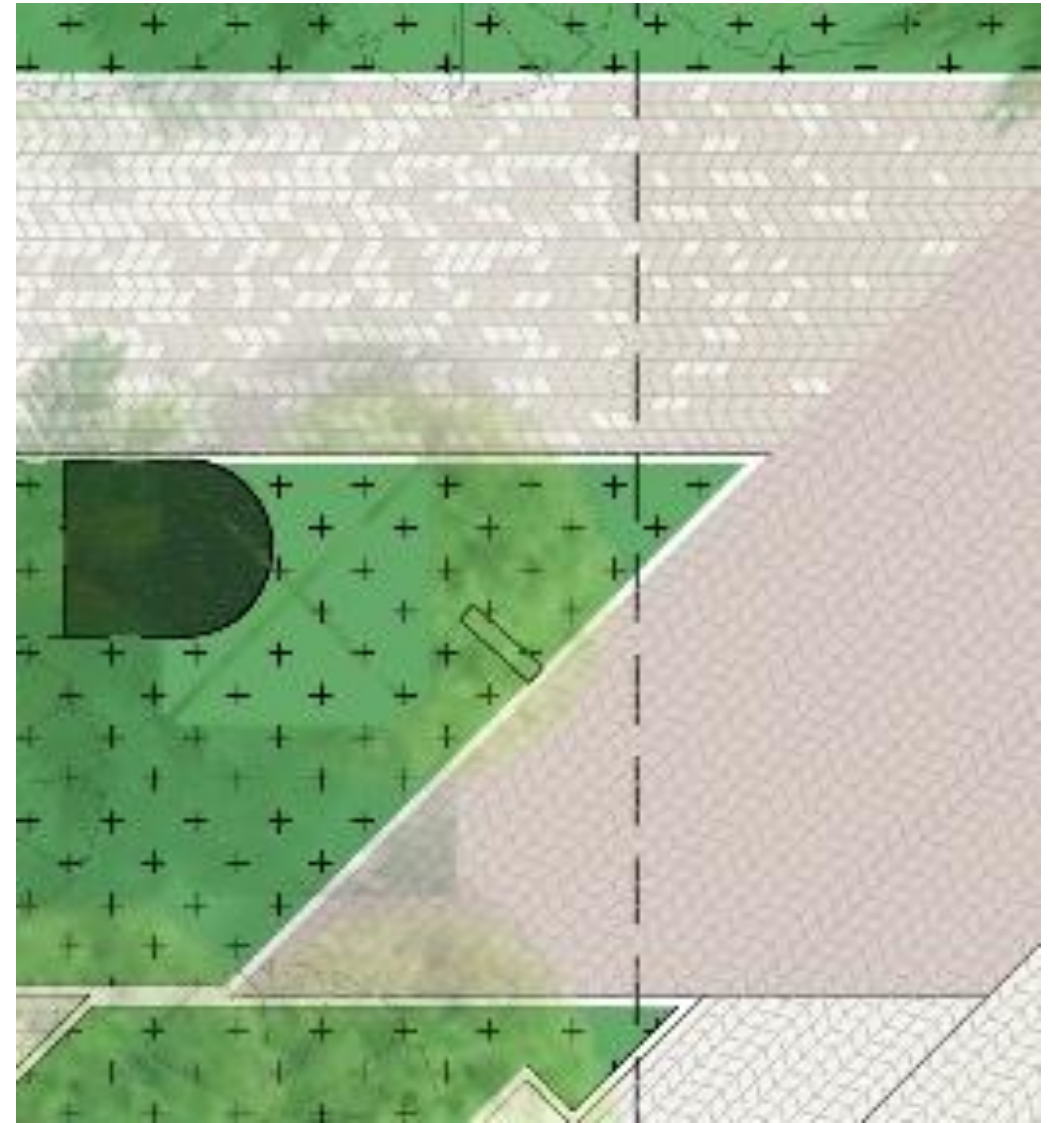












BAL HARBOUR 96th STREET ENTRY

Vison Plan Submission: April 23, 2020

