

# BAL HARBOUR

- V I L L A G E -

Mayor Jeffrey P. Freimark  
Vice Mayor Seth E. Salver  
Councilman David J. Albaum  
Councilman Buzzy Sklar  
Councilman David Wolf  
Lissandra Almaguer, Staff Trustee  
Lourdes Rodriguez, Staff Trustee

Village Manager Jorge M. Gonzalez  
Village Clerk Dwight S. Danie  
Village Attorneys Weiss Serota  
Helfman Cole & Bierman, P.L.

## General Employees' Retirement Board

Regular Meeting Agenda

November 21, 2023

At 6:30 PM

Bal Harbour Village Hall • 655 - 96th Street • Bal Harbour • Florida 33154

---

*This meeting will be conducted in-person. The meeting will also be broadcast on the Village's website ([www.balharbourfl.gov](http://www.balharbourfl.gov)). Members of the public are encouraged to participate by email ([meetings@balharbourfl.gov](mailto:meetings@balharbourfl.gov)) or by telephone at 305-865-6449.*

- 1 Call to Order / Roll Call**
- 2 Pledge of Allegiance**
- 3 Board Minutes for Approval**
  - 3.1** September 19, 2023 Board Minutes  
[GERB Minutes September 19, 2023.pdf](#)
- 4 Village Manager's Report**
  - 4.1** Village Manager's Memorandum  
[GERB - VillageManagersMemorandum Nov21 2023.pdf](#)
- 5 Approve/Ratify Increase in Israel Bond Investment**
  - 5.1** Israel Bond Investment Increase  
[GERB Approve-Ratify \\$100000 Israel Bond Investment Increase.pdf](#)  
[Reso 2023-1594 Israel Support Resolution October 17 2023 Signed.pdf](#)
- 6 Investment Consultant Quarterly Report for September 30, 2023**
  - 6.1** 9/30/23 Quarterly Investment Report  
[Village of Bal Harbour 3Q 2023.pdf](#)

## **7 Request for Return of Accumulated Pension Contributions**

### **7.1 Richard Carmenaty Lump Sum Request**

[Carmenaty Cover Ltr.pdf](#)

[Carmenaty Termination Benefits.pdf](#)

## **8 DROP Application for Approval**

### **8.1 DROP Application**

[Mobley DROP Estimate Letter.pdf](#)

[Mobley DROP BC Estimate 12-1-23.pdf](#)

## **9 Public Comment**

## **10 Motion to Adjourn**

One or more members of any Village Committee/Board may attend this meeting of the Board and may discuss matters which may later come before their respective Boards/Committees.

The Agenda includes a section for Public Comment. On public comment matters, any person is entitled to be heard by this Board on any matter; however, no action shall be taken by the Board on a matter of public comment, unless the item is specifically listed on the agenda, or is added to the agenda by Board action.

Any person who acts as a lobbyist, pursuant to Village Code Section 2-301 (Lobbyists), must register with the Village Clerk, prior to engaging in lobbying activities before Village staff, boards, committees, and/or the Village Council. A copy of the Ordinance is available in the Village Clerk's Office at Village Hall.

If a person decides to appeal any decision made by the Board with respect to any matter considered at a meeting or hearing, that person will need a record of the proceedings and, for such purpose, may need to ensure that a verbatim record of the proceedings is made, which record includes the testimony and evidence upon which the appeal is to be based (F.S. 286.0105).

In accordance with the Americans with Disabilities Act of 1990, all persons who are disabled and who need special accommodations to participate in this proceeding because of that disability should contact the Village Clerk's Office (305-866-4633), not later than two business days prior to such proceeding.

All B meeting attendees, including Village staff and consultants, are subject to security screening utilizing a metal detector and/or wand, prior to entering the Council Chamber, Conference Room, or other meeting area located within Village Hall. This is for the safety of everyone. Thanks for your cooperation.

# BAL HARBOUR

- V I L L A G E -

Mayor Jeffrey Freimark  
Assistant Mayor Seth E. Salver  
Councilman David J. Albaum  
Councilman David Wolf  
Councilman Buzzy Sklar  
Lourdes Rodriguez - Staff Member (Elect)  
Lissandra Almaguer - Staff Member (Elect)

Village Manager Jorge M. Gonzalez  
Village Clerk Dwight S. Danie  
Village Attorneys Weiss Serota  
Helfman Cole & Bierman, P.L.

## **General Employees' Retirement Board**

Regular Meeting Minutes

September 19, 2023

At 6:30 PM

Bal Harbour Village Hall • 655 - 96th Street • Bal Harbour • Florida 33154

---

### **1 Call to Order** - Mayor Freimark called the meeting to order at 6:30 P.M.

The following were present:

Mayor Jeffrey Freimark  
Assistant Mayor Seth Salver  
Councilman David J. Albaum  
Councilman Buzzy Sklar

Elected Staff Member Lourdes Rodriguez  
Elected Staff Member Lissandra Almaguer

The following were present:

Councilman David Wolf\*

Also Present:

Jorge M. Gonzalez, Village Manager  
Dwight S. Danie, Village Clerk  
Susan Trevarthen, Village Attorney  
Rick Rivera, Pension Administrator, PCOF

**Pledge of Allegiance** - Mayor Freimark led the Council to the Pledge of Allegiance

**2 Approval of Board Minutes:** July 18, 2023 – Regular Meeting

**MOTION: A Motion to approve the July 18, 2023 regular meeting minutes was moved by Assistant Mayor Salver and seconded by Councilman Sklar.**

**VOTE: The Motion passed by unanimous voice vote (6-0).**

**3 Village Manager's Memorandum**

Village manager, Jorge Gonzalez, reviewed the Village Manager's memorandum that included the items board minutes for approval and annual budget for approval.

**4 General Employees' Retirement Plan Board Resolutions**

Village manager, Jorge Gonzalez, went over the proposed annual general employees' pension budget for October 1, 2023 to September 30, 2024. He said that the proposed amount of the budget was \$103,248 and that the approved budget for the last fiscal year was \$103,110.

**MOTION: A Motion to approve the General Employees' Pension budget in the amount of \$103,248 was moved by Assistant Mayor Salver and seconded by Trustee Rodriguez.**

**VOTE: The Motion passed by unanimous voice vote (6-0).**

**5 Motion to Adjourn**

**Motion: A Motion to adjourn the retirement meeting was made by Trustee Rodriguez and seconded by Mayor Freimark. The meeting was adjourned at 6:36 PM.**

**VOTE: The Motion passed by unanimous voice vote (6-0).**

---

Mayor Jeffrey Freimark  
Chair of the Board of Trustees



Attest:

---

Dwight S. Danie, Village Clerk, Board Secretary

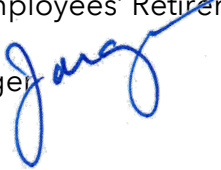


# BAL HARBOUR

- VILLAGE -

## GENERAL EMPLOYEES' RETIREMENT BOARD MEMORANDUM

TO: Honorable Mayor and General Employees' Retirement Board Members

FROM: Jorge M. Gonzalez, Village Manager 

DATE: November 21, 2023

SUBJECT: General Employees' Retirement Board

---

The following items are presented for our review and consideration.

- Approval of September 19, 2023 General Employees' Retirement Board Minutes
- Approve/Ratify an Increase in the Israel Bond Investment
- Investment Consultant Quarterly Report for September 30, 2023
- Request for Return of Accumulated Pension Contributions - Richard Carmenaty
- DROP Application for Approval - Lori Mobley



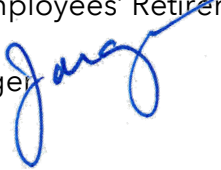


# BAL HARBOUR

- VILLAGE -

## GERB ACTION ITEM

TO: Honorable Mayor and General Employees' Retirement Board Members

FROM: Jorge M. Gonzalez, Village Manager 

DATE: November 21, 2023

SUBJECT: **Approval/Ratify \$100,000 Israel Bond Investment Increase**

### **BACKGROUND**

On October 2023 the Bal Harbour Village Council Passed Resolution 2023-1594 condemning all acts of terrorism and violence targeting innocent civilians by the terrorist organization Hamas and expressing support and solidarity with the people of Israel.

The Council approved a donation in the amount of \$50,000 to United Hatzalah of Israel towards emergency medical services in Israel and the provided direction to the General Employees' Retirement Board to consider purchasing State of Israel Bonds, consistent with and subject to all provision of the Village' investment policy, as a symbolic gesture of support for the people of Israel.

Mayor Freimark proposed increasing the current \$75,000 dollars General Employees' Fund invested in Israel Bonds an additional \$100,000, to which the Council unanimously agreed.

### **CONCLUSION**

The item before the General Employees' Retirement Board is to approve/ratify the proposed \$100,000 Israel Bond investment increase.

Attached:

1. Resolution 2023-1594 - Israel Support - October 17, 2023

RESOLUTION NO. 2023-1594

A RESOLUTION OF THE VILLAGE COUNCIL OF BAL HARBOUR VILLAGE, FLORIDA, CONDEMNING ALL ACTS OF TERRORISM AND VIOLENCE TARGETING INNOCENT CIVILIANS BY THE TERRORIST ORGANIZATION HAMAS; EXPRESSING SUPPORT AND SOLIDARITY WITH THE PEOPLE OF ISRAEL DURING THESE CHALLENGING TIMES; CALLING UPON U.S. PRESIDENT BIDEN AND THE U.S. CONGRESS TO SUPPORT AND APPROVE ISRAEL'S REQUEST FOR EQUIPMENT AND RESOURCES NEEDED FOR ITS IRON DOME MISSILE DEFENSE SYSTEM AND ITS COMBAT AIRCRAFT; AND DIRECTING THE VILLAGE'S PENSION BOARDS TO CONSIDER PURCHASING STATE OF ISRAEL BONDS, CONSISTENT WITH AND SUBJECT TO ALL PROVISIONS OF THE VILLAGE'S INVESTMENT POLICY, AS A SYMBOLIC GESTURE OF SUPPORT FOR THE PEOPLE OF ISRAEL; PROVIDING FOR IMPLEMENTATION; AND PROVIDING FOR AN EFFECTIVE DATE.

**WHEREAS**, Bal Harbour Village stands as a symbol of diversity, tolerance, and unity among its residents, recognizing the importance of fostering relationships with nations across the world; and

**WHEREAS**, the Village values peace, security, and the protection of human rights as fundamental principles that should be upheld globally; and

**WHEREAS**, the recent terrorist attacks by terrorist organization Hamas have targeted the people of Israel on Shabbat and during the Jewish holy days, resulting in the loss of innocent lives; and

**WHEREAS**, the Village condemns all acts of terrorism and violence targeting innocent civilians, and acknowledges the resilience and courage of the people of Israel in the face of these threats; and

**WHEREAS**, the Village wishes to express its support and solidarity with the people of Israel during these challenging times and offer its condolences to those affected by these acts of violence; and

**WHEREAS**, South Florida, and Bal Harbour Village, are home to a sizeable Jewish population; and

**WHEREAS**, this Resolution serves as an expression of Bal Harbour Village's

unwavering support and solidarity with the people of Israel during these challenging times; and

**WHEREAS**, Bal Harbour Village commends President Macron of France, Chancellor Scholz of Germany, Prime Minister Meloni of Italy, Prime Minister Sunak of the United Kingdom, and President Biden of the United States for their Joint Statement on October 9, 2023, expressing steadfast support of Israel and united condemnation of Hamas and its appalling acts of terrorism; and

**WHEREAS**, the Mayor and Village Council call upon President Biden and the U.S. Congress to immediately support and approve Israel's request for equipment and resources needed for its Iron Dome missile defense system and its combat aircraft; and

**WHEREAS**, furthermore, the Mayor and Village Council wish to encourage the Village's Pension Boards to consider purchasing State of Israel bonds, consistent with and subject to all provisions of the Village's investment policy, as a symbolic gesture of support for the people of Israel during these trying times.

**NOW, THEREFORE, BE IT RESOLVED BY THE VILLAGE COUNCIL OF BAL HARBOUR VILLAGE, FLORIDA, AS FOLLOWS:**

**Section 1.** The Mayor and the Village Council hereby condemn all acts of terrorism and violence targeting innocent civilians by terrorist organization Hamas, and express support and solidarity with the people of Israel during these challenging times.

**Section 2.** The Mayor and Village Council express their deepest condolences to the families of the victims and their solidarity with the people of Israel during this difficult time.

**Section 3.** The Mayor and Village Council call upon President Biden and the U.S. Congress to immediately support and approve Israel's request for equipment and resources needed for its Iron Dome missile defense system and its combat aircraft.

**Section 4.** The Mayor and Village Council direct the Village's Pension Boards to consider purchasing State of Israel bonds, consistent with and subject to all provisions of the Village's investment policy, as a symbolic gesture of support for the people of Israel.


**Section 5.** The Mayor and Village Council approve the donation in the amount of \$50,000 to United Hatzalah of Israel towards in emergency medical services in Israel.

The foregoing Resolution was moved by Councilman Buzzy Sklar, and seconded by Vice Mayor Seth Salver and upon being put to a vote, the vote was as follows:

Mayor Jeffrey P. Freimark	<u>Yes</u>
Vice Mayor Seth E. Salver	<u>Yes</u>
Councilmember David J. Albaum	<u>Yes</u>
Councilmember Buzzy Sklar	<u>Yes</u>
Councilmember David Wolf	<u>Yes</u>

PASSED AND ADOPTED this 17<sup>th</sup> day of October 2023.

  
Vice Mayor Seth E. Salver

  
Councilman David J. Albaum

  
Councilman Buzzy Sklar

  
Councilman David Wolf

  
Mayor Jeffrey P. Freimark



ATTEST:

  
Dwight S. Danie, Village Clerk



APPROVED AS TO FORM AND LEGAL SUFFICIENCY:

  
Village Attorney  
Weiss Serota Helfman Cole & Bierman P.L.

# Village of Bal Harbour

Quarterly Performance Report

As of September 30, 2023

---

Scott Owens, CFA®, CIMA®  
Managing Director - Wealth Management  
Institutional Consulting Director  
Corporate Retirement Director  
Impact Investing Director  
Alternative Investment Director  
Scott.Owens@msggraystone.com  
(813) 227-2027

---

Theodore J. (TJ) Loew, CFA®  
Institutional Consultant  
Theodore.Loew@msggraystone.com  
(813) 227-2088



## Village of Bal Harbour

### Capital Markets Returns

as of September 30, 2023

U.S. Equity Market % Returns for the Period Ending September 30, 2023							
	Quarter to Date	Year to Date	12 Months	Three Years (annualized)	Five Years (annualized)	Seven Years (annualized)	Ten Years (annualized)
S&P 500 Index	(3.27)	13.07	21.62	10.15	9.92	12.24	11.91
Dow Jones Industrial Average	(2.10)	2.73	19.18	8.62	7.14	11.47	10.79
Russell 3000 Index	(3.25)	12.39	20.46	9.38	9.14	11.64	11.28
Russell 3000 Value Index	(3.15)	1.66	14.05	11.19	5.98	7.79	8.29
Russell 3000 Growth Index	(3.34)	23.77	26.64	7.54	11.70	15.05	13.94
Russell 1000 Index	(3.15)	13.01	21.19	9.53	9.63	12.00	11.63
Russell 1000 Value Index	(3.17)	1.79	14.44	11.05	6.23	7.91	8.45
Russell 1000 Growth Index	(3.13)	24.98	27.72	7.97	12.42	15.64	14.48
Russell Midcap Index	(4.68)	3.91	13.45	8.09	6.38	8.68	8.99
Russell Midcap Value Index	(4.46)	0.54	11.05	10.98	5.18	6.83	7.91
Russell Midcap Growth Index	(5.22)	9.88	17.47	2.61	6.97	10.40	9.95
Russell 2000 Index	(5.13)	2.54	8.93	7.16	2.40	6.62	6.65
Russell 2000 Value Index	(2.96)	(0.53)	7.84	13.32	2.59	5.94	6.19
Russell 2000 Growth Index	(7.32)	5.24	9.59	1.09	1.55	6.77	6.72

S&P 500 Sector % Returns for the Period Ending September 30, 2023	
	Quarter to Date
Energy	12.22
Communication Services	3.07
Financials	(1.13)
Health Care	(2.65)
Materials	(4.76)
Consumer Discretionary	(4.80)
Industrials	(5.16)
Technology	(5.64)
Consumer Staples	(5.97)
Real Estate	(8.90)
Utilities	(9.25)

Past Performance is not a guarantee of future results. Indices are not available for direct investment. Source: PARis

**Village of Bal Harbour**  
**Capital Markets Returns**  
**as of September 30, 2023**

Developed Markets Equity % Returns for the Period Ending September 30, 2023										
	U.S. Dollar					Local Currency				
	Quarter to Date	Year to Date	12 Months	3 Years	5 Years	Quarter to Date	Year to Date	12 Months	3 Years	5 Years
<b>Regional and Other Multi-Country Indices</b>										
MSCI EAFE	(4.11)	7.08	25.65	5.75	3.24	(1.20)	11.20	20.96	11.36	6.17
MSCI Europe	(4.96)	7.96	28.84	7.23	3.96	(2.03)	8.88	20.27	10.88	6.08
MSCI Far East	(2.29)	7.68	22.36	2.41	1.68	0.46	19.66	25.32	12.89	6.47
MSCI Pacific ex. Japan	(4.75)	(4.44)	10.58	4.15	1.78	(2.70)	(0.90)	9.70	6.73	3.36
MSCI The World	(3.36)	11.55	22.58	8.60	7.80	(2.52)	15.48	24.22	11.25	N/A
MSCI World ex. U.S.	(4.10)	6.73	24.00	6.07	3.44	(1.26)	10.45	19.81	11.24	6.24
<b>National Indices</b>										
MSCI Hong Kong	(11.08)	(17.59)	(2.58)	(4.49)	(3.40)	(11.13)	(17.31)	(2.79)	(4.17)	(3.38)
MSCI Ireland	(7.52)	17.49	42.74	2.30	4.45	(4.70)	18.44	32.08	5.85	6.40
MSCI Japan	(1.45)	11.60	26.40	3.19	2.44	1.75	26.21	30.31	15.82	8.19
MSCI Singapore	N/A	N/A	N/A	N/A	N/A	0.47	2.39	6.50	4.04	(1.22)
Emerging Markets Equity % Returns for the Period Ending September 30, 2023										
	U.S. Dollar					Local Currency				
	Quarter to Date	Year to Date	12 Months	3 Years	5 Years	Quarter to Date	Year to Date	12 Months	3 Years	5 Years
<b>Regional and Other Multi-Country Indices</b>										
MSCI EM	(2.79)	2.16	12.17	(1.34)	0.93	(1.29)	4.39	11.35	0.98	3.08
<b>National Indices</b>										
MSCI China	(1.83)	(7.12)	5.44	(14.14)	(4.02)	(1.86)	(6.08)	5.66	(13.50)	(3.75)
MSCI Malaysia	4.49	(7.70)	5.25	(3.54)	(4.84)	5.11	(1.62)	6.57	0.47	(2.41)
MSCI Taiwan	(7.10)	11.81	22.65	7.38	11.15	(3.71)	17.43	24.70	11.33	12.39
MSCI Thailand	(4.42)	(13.63)	0.29	4.09	(4.73)	(4.42)	(13.63)	0.29	4.09	(4.73)

Past Performance is not a guarantee of future results. Indices are not available for direct investment. Source: PARis

**Village of Bal Harbour**  
**Capital Markets Returns**  
**as of September 30, 2023**

<b>Fixed Income % Returns for the Period Ending September 30, 2023</b>							
	<b>Quarter to Date</b>	<b>Year to Date</b>	<b>12 Months</b>	<b>Three Years (annualized)</b>	<b>Five Years (annualized)</b>	<b>Seven Years (annualized)</b>	<b>Ten Years (annualized)</b>
<b>U.S. Fixed Income</b>							
90-Day T-Bills	1.38	3.80	4.71	1.78	1.74	1.56	1.12
Bloomberg US Aggregate	(3.23)	(1.21)	0.64	(5.21)	0.10	(0.09)	1.13
Barclays Credit	(3.01)	0.03	3.47	(4.83)	0.86	0.73	2.12
Barclays Govt/Credit	(2.99)	(0.85)	0.93	(5.32)	0.41	0.09	1.31
Barclays Government	(2.99)	(1.45)	(0.74)	(5.73)	(0.03)	(0.47)	0.65
Barclays High Yield	0.46	5.87	10.28	1.75	2.95	3.79	4.24
Barclays Intermediate Govt/Credit	(0.83)	0.66	2.20	(2.93)	1.02	0.62	1.27
Barclays Long Govt/Credit	(9.37)	(5.40)	(2.93)	(11.90)	(1.21)	(1.37)	1.94
Barclays Mortgage Backed	(4.05)	(2.27)	(0.17)	(5.09)	(0.78)	(0.64)	0.61
Barclays Municipal	(3.95)	(1.38)	2.66	(2.30)	1.05	0.92	2.29
<b>Global Fixed Income</b>							
Merrill Lynch Global High Yield	0.07	5.36	12.71	(0.12)	1.84	2.86	3.30
Barclays Global Treasury ex. US	(5.41)	(3.46)	3.42	(10.29)	(4.10)	(3.38)	(2.17)
Barclays Capital Majors ex. U.S.	(5.61)	(6.12)	0.57	(11.53)	(4.90)	(4.46)	(2.65)

Past Performance is not a guarantee of future results. Indices are not available for direct investment. Source: PARis

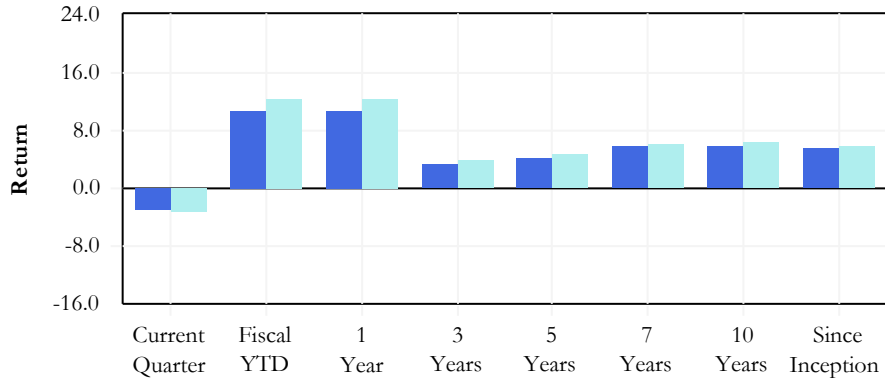


# Village of Bal Harbour

## Total Fund - Executive Summary

as of September 30, 2023

### Manager Performance Chart



### Manager Annualized Performance

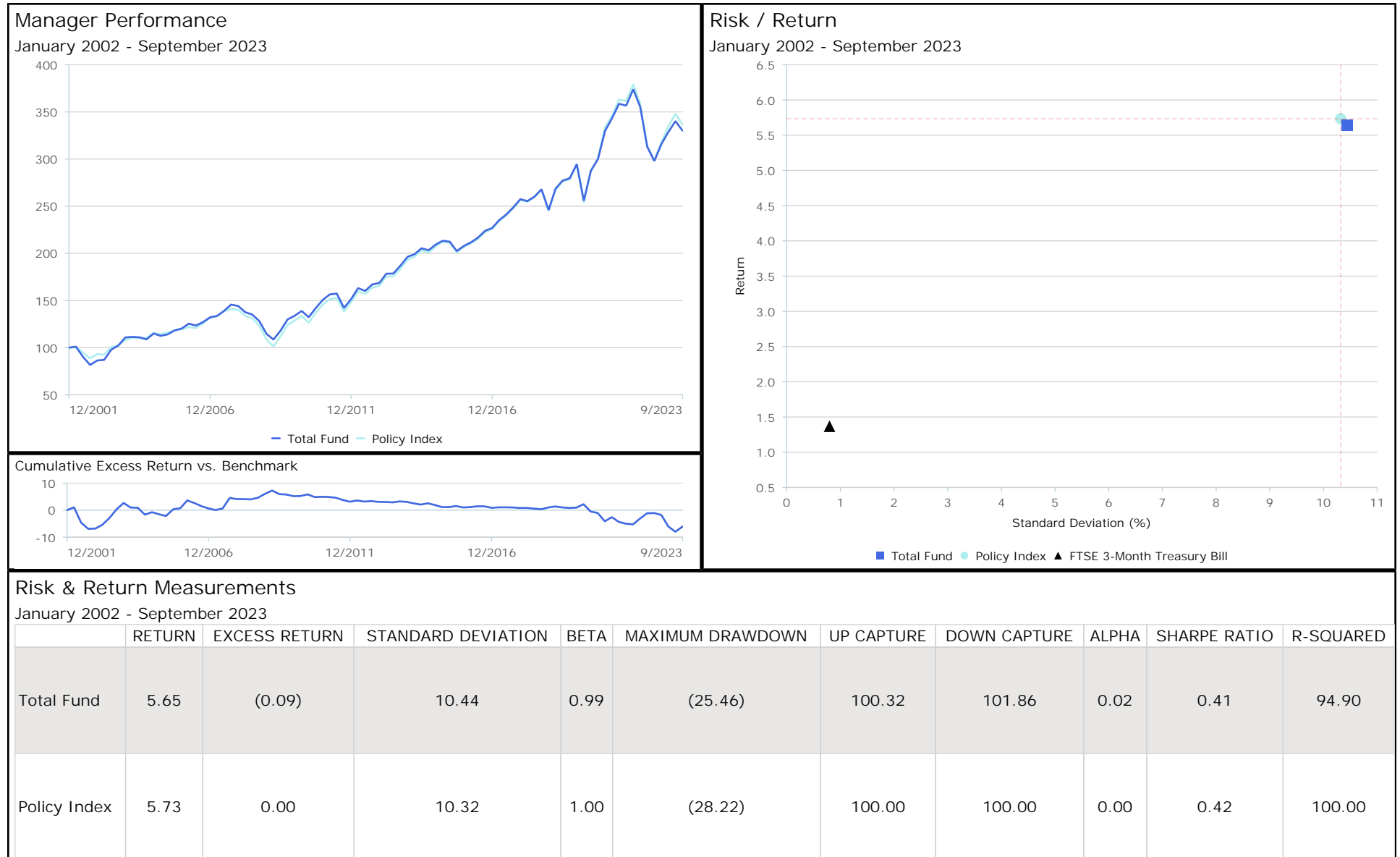
	Current Quarter	Fiscal YTD	1 Year	3 Years	5 Years	7 Years	10 Years	Inception 01/01/2002
Total Fund	-2.94	10.81	10.81	3.25	4.26	5.70	5.85	5.65
Policy Index	-3.43	12.44	12.44	3.76	4.67	6.07	6.23	5.73
Differences	0.49	-1.63	-1.63	-0.51	-0.41	-0.37	-0.38	-0.08

	Current Quarter	Fiscal YTD	1 Year	3 Years	5 Years	7 Years	10 Years
Total Fund							
Beginning Market Value	20,001	16,730	16,730	16,335	13,811	11,265	9,246
Net Contributions	-187	575	575	1,101	1,898	2,131	2,381
Fees/Expenses	-	-1	-1	-16	-26	-26	-26
Income	17	58	58	58	79	79	79
Gain/Loss	-603	1,865	1,865	1,750	3,466	5,778	7,547
Ending Market Value	19,228	19,228	19,228	19,228	19,228	19,228	19,228

The prices, quotes, or statistics contained herein have been obtained from sources believed to be reliable, however, its accuracy cannot be guaranteed. Past performance is not a guarantee of future results.

# Village of Bal Harbour

Total Fund - Risk / Return Analysis  
as of September 30, 2023

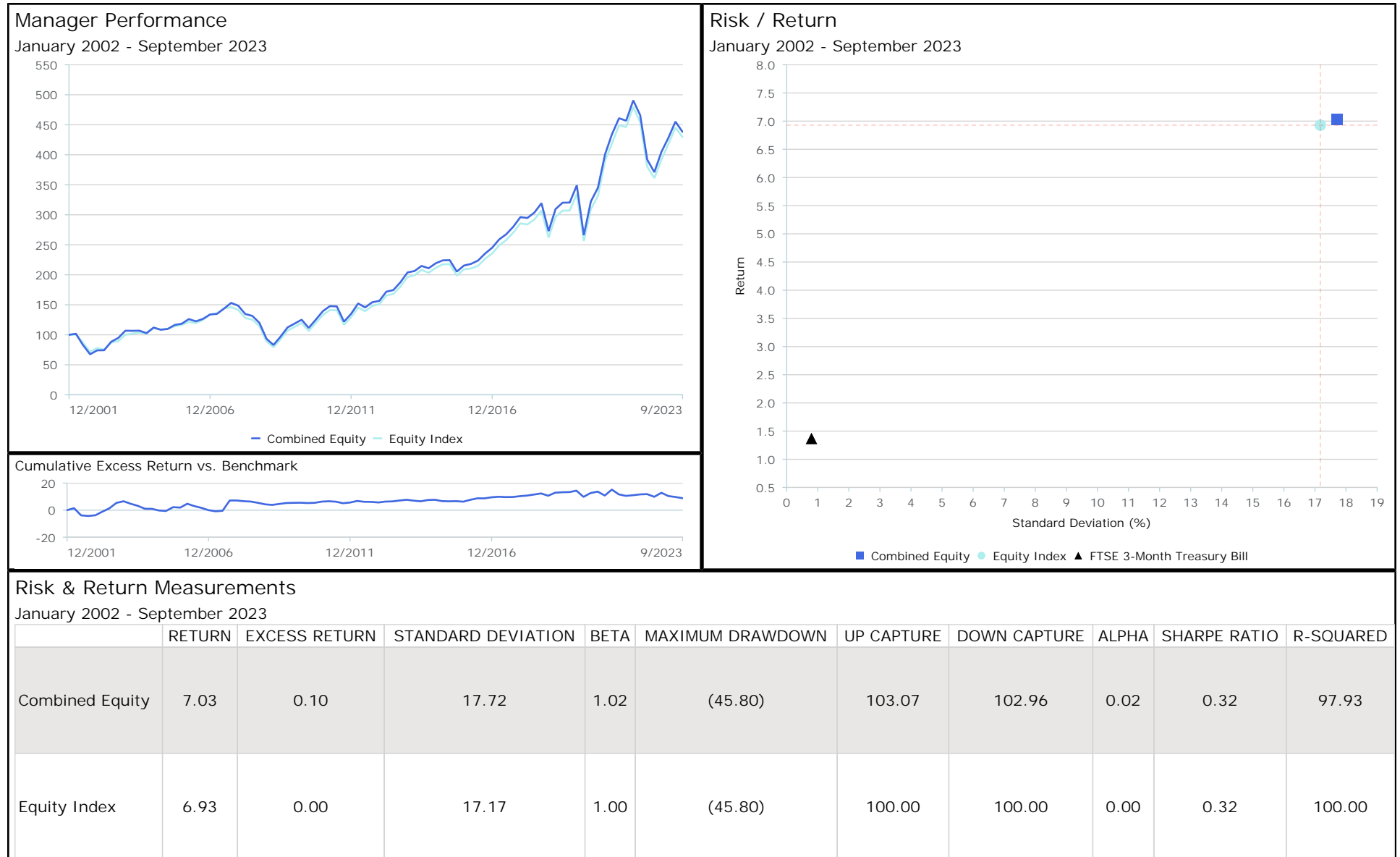


The prices, quotes, or statistics contained herein have been obtained from sources believed to be reliable, however, its accuracy cannot be guaranteed. Past performance is not a guarantee of future results.

# Village of Bal Harbour

## Combined Equity - Risk / Return Analysis

as of September 30, 2023

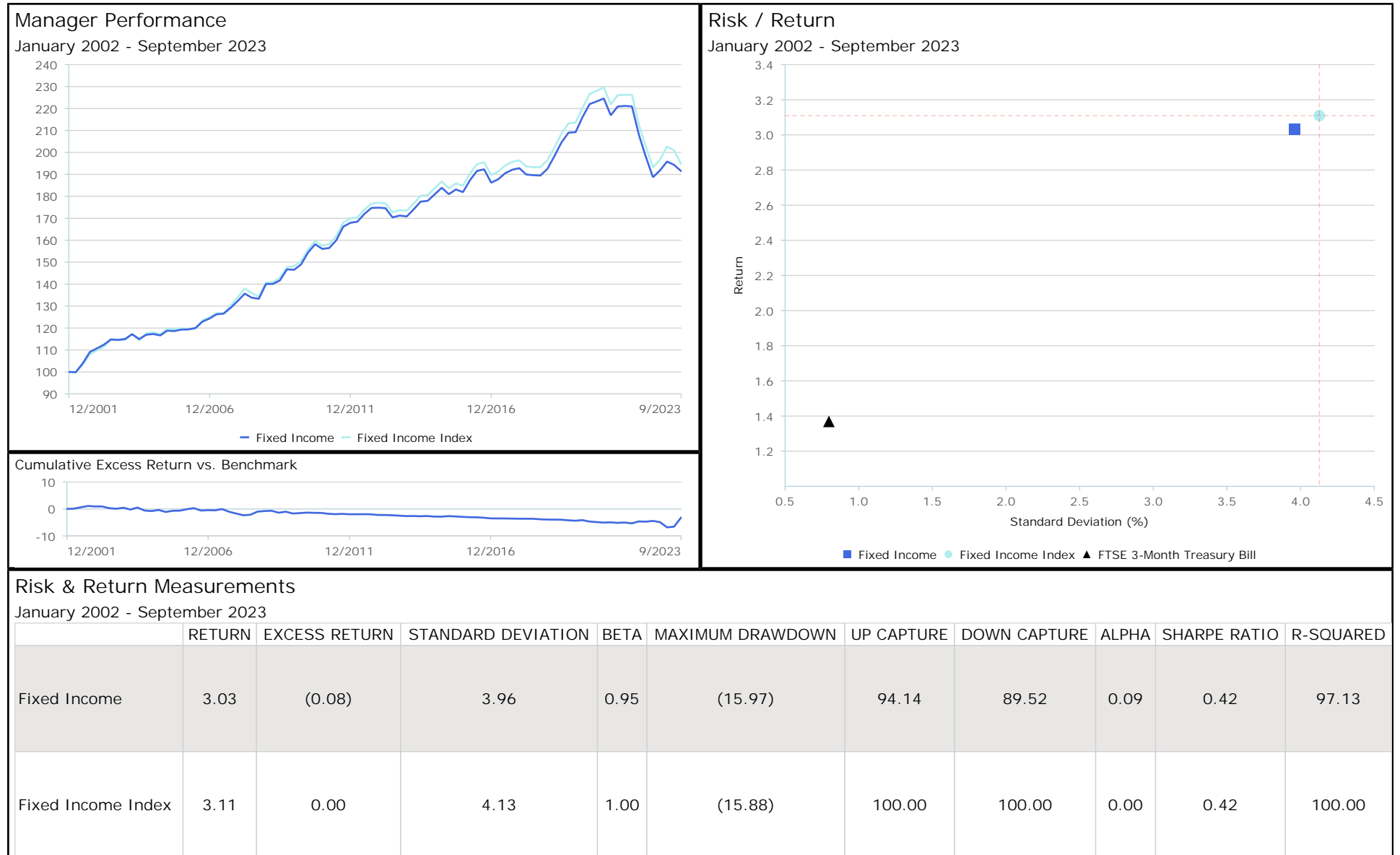


The prices, quotes, or statistics contained herein have been obtained from sources believed to be reliable, however, its accuracy cannot be guaranteed. Past performance is not a guarantee of future results.

# Village of Bal Harbour

## Fixed Income - Risk / Return Analysis

as of September 30, 2023



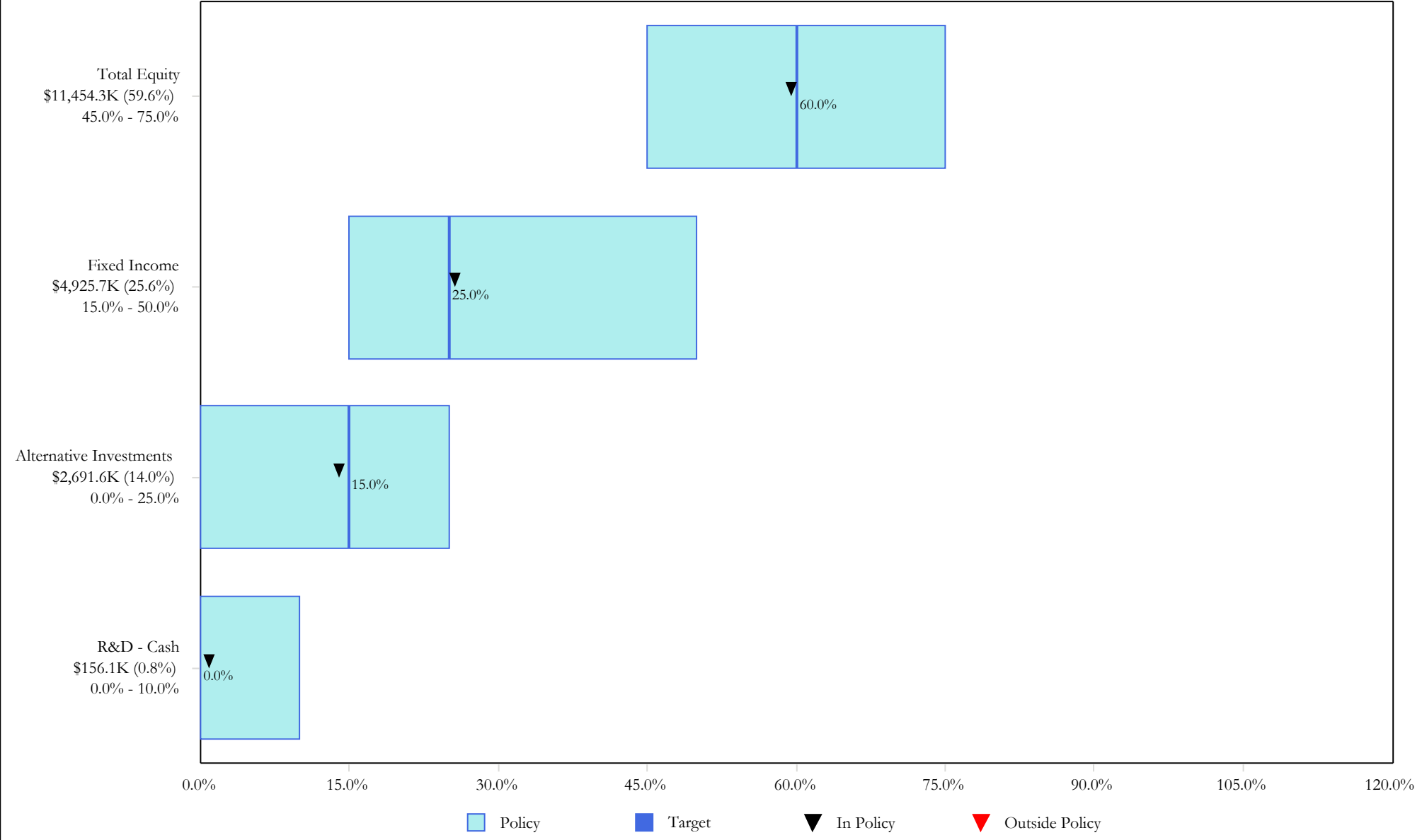
The prices, quotes, or statistics contained herein have been obtained from sources believed to be reliable, however, its accuracy cannot be guaranteed. Past performance is not a guarantee of future results.

# Village of Bal Harbour

## Asset Allocation Compliance

as of September 30, 2023

### Executive Summary



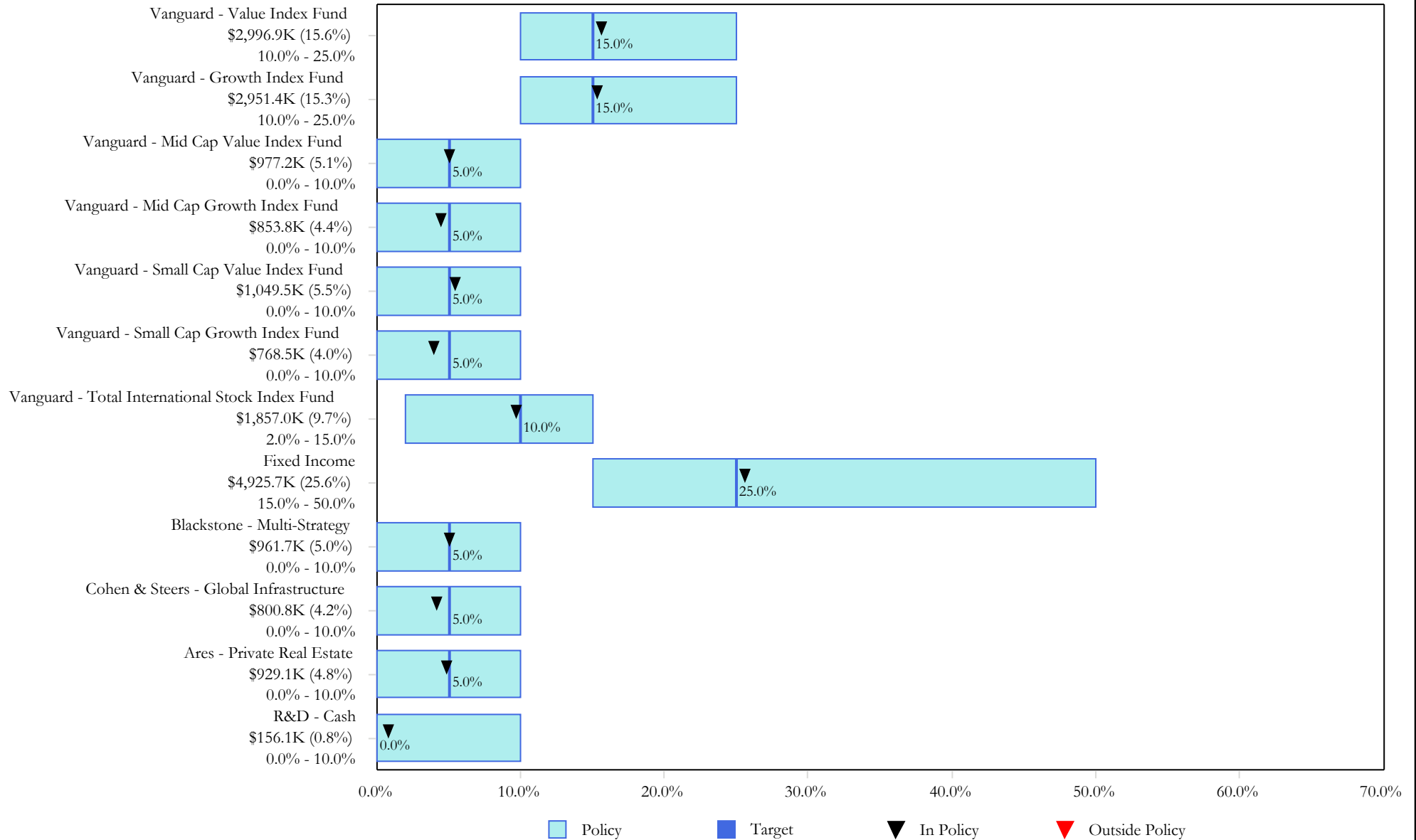
The prices, quotes, or statistics contained herein have been obtained from sources believed to be reliable, however, its accuracy cannot be guaranteed. Past performance is not a guarantee of future results.

# Village of Bal Harbour

## Asset Allocation Compliance

as of September 30, 2023

### Executive Summary



The prices, quotes, or statistics contained herein have been obtained from sources believed to be reliable, however, its accuracy cannot be guaranteed. Past performance is not a guarantee of future results.

# Village of Bal Harbour

## Asset Allocation & Time Weighted Performance

as of September 30, 2023

	Allocation		Performance(%)								
	Market Value (\$)	%	Quarter To Date	Fiscal YTD	1 Year	3 Years	5 Years	7 Years	10 Years	Since Inception	Inception Date
<b>Total Fund</b>	<b>19,227,678</b>	<b>100.00</b>	<b>-2.94</b>	<b>10.81</b>	<b>10.81</b>	<b>3.25</b>	<b>4.26</b>	<b>5.70</b>	<b>5.85</b>	<b>5.65</b>	<b>01/01/2002</b>
Total Fund (net)			-2.94	10.81	10.81	3.22	4.19	5.59	5.72	5.41	
Policy Index			-3.43	12.44	12.44	3.76	4.67	6.07	6.23	5.73	
<b>Equities</b>											
Vanguard - Value Index Fund	2,996,911	15.59	-2.37	14.79	14.79	N/A	N/A	N/A	N/A	1.68	06/01/2021
Vanguard - Value Index Fund (net)			-2.37	14.79	14.79	N/A	N/A	N/A	N/A	1.68	
CRSP Lg VL			-2.33	14.85	14.85	N/A	N/A	N/A	N/A	2.11	
Vanguard - Growth Index Fund	2,951,428	15.35	-3.64	28.18	28.18	N/A	N/A	N/A	N/A	0.80	06/01/2021
Vanguard - Growth Index Fund (net)			-3.64	28.18	28.18	N/A	N/A	N/A	N/A	0.80	
CRSP Lg Cap Gr			-3.69	28.15	28.15	N/A	N/A	N/A	N/A	0.91	
Vanguard - Mid Cap Value Index Fund	977,208	5.08	-4.85	10.33	10.33	N/A	N/A	N/A	N/A	-1.95	06/01/2021
Vanguard - Mid Cap Value Index Fund (net)			-4.85	10.33	10.33	N/A	N/A	N/A	N/A	-1.95	
CRSP MC VL			-4.85	10.37	10.37	N/A	N/A	N/A	N/A	-1.67	
Vanguard - Mid Cap Growth Index Fund	853,763	4.44	-5.28	15.06	15.06	N/A	N/A	N/A	N/A	-5.36	06/01/2021
Vanguard - Mid Cap Growth Index Fund (net)			-5.28	15.06	15.06	N/A	N/A	N/A	N/A	-5.36	
CRSP MID Cap Gr			-5.27	15.12	15.12	N/A	N/A	N/A	N/A	-5.17	
Vanguard - Small Cap Value Index Fund	1,049,513	5.46	-3.07	13.93	13.93	N/A	N/A	N/A	N/A	-1.95	06/01/2021
Vanguard - Small Cap Value Index Fund (net)			-3.07	13.93	13.93	N/A	N/A	N/A	N/A	-1.95	
CRSP SM VL			-3.09	13.86	13.86	N/A	N/A	N/A	N/A	-1.99	
Vanguard - Small Cap Growth Index Fund	768,528	4.00	-6.59	10.57	10.57	N/A	N/A	N/A	N/A	-9.92	06/01/2021
Vanguard - Small Cap Growth Index Fund (net)			-6.59	10.57	10.57	N/A	N/A	N/A	N/A	-9.92	
CRSP SM GR			-6.63	10.43	10.43	N/A	N/A	N/A	N/A	-9.92	
Vanguard - Total International Stock Index Fund	1,856,974	9.66	-4.02	20.46	20.46	N/A	N/A	N/A	N/A	-6.05	06/01/2021
Vanguard - Total International Stock Index Fund (net)			-4.02	20.46	20.46	N/A	N/A	N/A	N/A	-6.05	
FTSE Global All Cap x US			-3.26	20.79	20.79	N/A	N/A	N/A	N/A	-5.38	

The prices, quotes, or statistics contained herein have been obtained from sources believed to be reliable, however, its accuracy cannot be guaranteed. Past performance is not a guarantee of future results.

# Village of Bal Harbour

## Asset Allocation & Time Weighted Performance

as of September 30, 2023

	Allocation		Performance(%)								
	Market Value (\$)	%	Quarter To Date	Fiscal YTD	1 Year	3 Years	5 Years	7 Years	10 Years	Since Inception	Inception Date
<b>Fixed Income</b>											
Vanguard - Short-Term Bond Index	2,424,384	12.61	0.14	N/A	N/A	N/A	N/A	N/A	N/A	1.40	03/01/2023
Vanguard - Short-Term Bond Index (net)			0.14	N/A	N/A	N/A	N/A	N/A	N/A	1.40	
BBgBarc US 1-5Y GovCredit			0.21	N/A	N/A	N/A	N/A	N/A	N/A	1.41	
Vanguard - Total Bond Market Index Fund	2,426,313	12.62	-3.09	-0.01	-0.01	N/A	N/A	N/A	N/A	-6.32	06/01/2021
Vanguard - Total Bond Market Index Fund (net)			-3.09	-0.01	-0.01	N/A	N/A	N/A	N/A	-6.32	
BB US Agg - Float Adjusted TR			-3.11	0.78	0.78	N/A	N/A	N/A	N/A	-5.91	
Israel Bonds	75,000	0.39	0.00	N/A	N/A	N/A	N/A	N/A	N/A	0.00	04/01/2023
Israel Bonds (net)			0.00	N/A	N/A	N/A	N/A	N/A	N/A	0.00	
90-Day T-Bills			1.38	N/A	N/A	N/A	N/A	N/A	N/A	2.65	
<b>Alternative Investments</b>											
Blackstone - Multi-Strategy	961,670	5.00	2.34	6.71	6.71	N/A	N/A	N/A	N/A	2.12	06/01/2022
Blackstone - Multi-Strategy (net)			2.34	6.71	6.71	N/A	N/A	N/A	N/A	2.12	
HFRX Global Hedge Fund			0.75	1.55	1.55	N/A	N/A	N/A	N/A	0.18	
Cohen & Steers - Global Infrastructure	800,806	4.16	-9.13	-0.13	-0.13	N/A	N/A	N/A	N/A	-10.72	06/01/2022
Cohen & Steers - Global Infrastructure (net)			-9.13	-0.13	-0.13	N/A	N/A	N/A	N/A	-10.72	
DJ Brookfield Gbl Infra Comp TR			-6.93	4.50	4.50	N/A	N/A	N/A	N/A	-10.28	
Ares - Private Real Estate	929,095	4.83	-0.83	-3.28	-3.28	N/A	N/A	N/A	N/A	-1.76	07/01/2022
Ares - Private Real Estate (net)			-0.86	-3.39	-3.39	N/A	N/A	N/A	N/A	-1.85	
Bloomberg US Aggregate			-3.23	0.64	0.64	N/A	N/A	N/A	N/A	-3.33	
<b>Cash &amp; Equivalents</b>											
R&D - Cash	156,084	0.81	0.62	3.55	3.55	1.35	N/A	N/A	N/A	1.20	04/30/2020
FTSE Treasury Bill 3 Month			1.38	4.71	4.71	1.78	N/A	N/A	N/A	1.59	

The prices, quotes, or statistics contained herein have been obtained from sources believed to be reliable, however, its accuracy cannot be guaranteed. Past performance is not a guarantee of future results.



# Village of Bal Harbour

## Policy Index History

As of September 30, 2023

Policy Index	Weight (%)	Policy Index	Weight (%)
<b>Jan-2002</b>		<b>Jun-2021</b>	
BB US Intermediate Gov/Cr	50.00	CRSP Lg VL	17.50
S&P 500 Total Return	50.00	CRSP Lg Cap Gr	17.50
<b>Apr-2006</b>		CRSP MC VL	5.00
BB US Intermediate Gov/Cr	40.00	CRSP MID Cap Gr	5.00
S&P 500 Total Return	45.00	CRSP SM VL	5.00
S&P 400 Midcap TR	5.00	CRSP SM GR	5.00
Russell 2000	5.00	FTSE Global All Cap x US	10.00
MSCI EAFE	5.00	BB US Agg - Float Adjusted TR	35.00
<b>Jan-2008</b>			
BB US Intermediate Gov/Cr	36.50		
S&P 500 Total Return	53.70		
S&P 400 Midcap TR	2.40		
Russell 2000	1.50		
MSCI EAFE	3.00		
FTSE Treasury Bill 3 Month	2.90		
<b>Apr-2010</b>			
Bloomberg US Aggregate	35.00		
S&P 500 Total Return	30.00		
S&P 400 Midcap TR	10.00		
Russell 2000	10.00		
MSCI EAFE	7.00		
FTSE Treasury Bill 3 Month	5.00		
MSCI EM (Gross)	3.00		

The prices, quotes, or statistics contained herein have been obtained from sources believed to be reliable, however, its accuracy cannot be guaranteed. Past performance is not a guarantee of future results.

# Important Notes About This Report

---

**PAST PERFORMANCE DOES NOT GUARANTEE FUTURE RESULTS. ACTUAL INDIVIDUAL ACCOUNT RESULTS WILL DIFFER FROM THE PERFORMANCE SHOWN IN THIS REPORT.**

**INVESTMENT DECISIONS:** Do not use this report as the sole basis for investment decisions. Do not select an allocation, investment disciplines or investment managers/funds based on performance alone. Consider, in addition to performance results, other relevant information about each investment manager or fund, as well as matters such as your investment objectives, risk tolerance and investment time horizon.

**SOURCE OF PERFORMANCE INFORMATION FOR INVESTMENT MANAGERS AVAILABLE IN CONSULTING AND EVALUATION SERVICES OR SELECT UMA:** Each investment manager included in this report that participates in one or more of the Consulting and Evaluation Services or Select UMA programs ("Programs") has a track record of investing assets in the relevant investment discipline. The investment manager's gross performance track record shown in this report consists of its gross performance in either the Morgan Stanley or the Smith Barney form of the Select UMA program (if that investment manager was in the Select UMA program) for periods for which sufficient data is available. If the strategy or similar strategies are available in both the Morgan Stanley and Smith Barney forms of the program, this profile presents the composite for the strategy that is closest to the strategy currently offered in the Select UMA program. If both strategies are equally close, the profile shows the longer of the two composites. For other periods, the gross performance track record is provided by the investment manager and consists of accounts managed by the investment manager in the same or a similar investment discipline, whether at Morgan Stanley or elsewhere (and may include institutional accounts, retail accounts and/or pooled investment vehicles such as mutual funds).

Morgan Stanley Smith Barney LLC offers investment program services through a variety of investment programs, which are opened pursuant to written client agreements. Each program offers investment managers, funds and features that are not available in other programs; conversely, some investment managers, funds or investment strategies may be available in more than one program. Morgan Stanley's investment advisory programs may require a minimum asset level and, depending on a client's specific investment objectives and financial position, may not be appropriate for the client. Please see the applicable program disclosure document for more information, available at [www.morganstanley.com/ADV](http://www.morganstanley.com/ADV) or from your Financial Advisor.

The investment management services of Morgan Stanley Smith Barney LLC and investment vehicles managed by Morgan Stanley Smith Barney LLC or its affiliates are not guaranteed and could result in the loss of value to your account. You should note that investing in financial instruments carries with it the possibility of losses and that a focus on above-market returns exposes the portfolio to above-average risk. Performance aspirations are not guaranteed and are subject to market conditions.

# Important Notes About This Report (Cont'd)

---

Generally, investment advisory accounts are subject to an annual asset-based fee (the “Fee”) which is payable monthly in advance (some account types may be billed differently). In general, the Fee covers Morgan Stanley investment advisory services, custody of securities with Morgan Stanley, trade execution with or through Morgan Stanley or its affiliates, as well as compensation to any Morgan Stanley Financial Advisor.

In addition, each account that is invested in a program that is eligible to purchase certain investment products, such as mutual funds, will also pay a Platform Fee (which is subject to a Platform Fee offset) as described in the applicable ADV brochure. Accounts invested in the Select UMA program may also pay a separate Sub-Manager fee, if applicable.

If your account is invested in mutual funds or exchange traded funds (collectively “funds”), you will pay the fees and expenses of any funds in which your account is invested. Fees and expenses are charged directly to the pool of assets the fund invests in and are reflected in each fund’s share price. These fees and expenses are an additional cost to you and would not be included in the Fee amount in your account statements. The advisory program you choose is described in the applicable Morgan Stanley Smith Barney LLC ADV Brochure, available at [www.morganstanley.com/ADV](http://www.morganstanley.com/ADV).

Morgan Stanley or Executing Sub-Managers, as applicable, in some of Morgan Stanley’s Separately Managed Account (“SMA”) programs may effect transactions through broker-dealers other than Morgan Stanley or our affiliates. In such instance, you may be assessed additional costs by the other firm in addition to the Morgan Stanley and Sub-Manager fees. Those costs will be included in the net price of the security, not separately reported on trade confirmations or account statements. Certain Sub-Managers have historically directed most, if not all, of their trades to outside firms. Information provided by Sub-Managers concerning trade execution away from Morgan Stanley is summarized at:

<http://www.morganstanley.com/wealth/investmentsolutions/pdfs/adv/sotresponse.pdf>

[www.morganstanley.com/wealth/investmentsolutions/pdfs/adv/sotresponse.pdf](http://www.morganstanley.com/wealth/investmentsolutions/pdfs/adv/sotresponse.pdf). For more information on trading and costs, please refer to the ADV Brochure for your program(s), available at [www.morganstanley.com/ADV](http://www.morganstanley.com/ADV), or contact your Financial Advisor / Private Wealth Advisor.

# Important Notes About This Report (Cont'd)

---

There may be differences between the performance in the different forms of the Select UMA program, in different Programs, and between the performance in Programs and performance outside the Programs, due to, among other things, investment and operational differences. For example:

- Institutional accounts included in related performance may hold more securities than the Program accounts, participate in initial public offerings (IPOs) and invest directly in foreign securities (rather than in ADRs).
- Mutual funds included in related performance may hold more securities than the Program accounts, may participate in IPOs, may engage in options and futures transactions, and are subject to certain regulatory limitations.
- Performance results in Select UMA accounts could differ from that in Consulting and Evaluation Services accounts because Select UMA accounts may hold fewer securities, and have automatic rebalancing, wash sale loss and tax harvesting features.

You should read the investment manager profile accompanying this report for each investment manager. The investment manager profile gives further details on the sources of performance information for a particular investment manager, as well as other calculations of the manager's performance returns (such as performance net of fees and expenses).

**SOURCE OF PERFORMANCE INFORMATION FOR OTHER INVESTMENT MANAGERS:** For any investment managers shown in this report that are not available in the Consulting and Evaluation Services or Select UMA programs, the performance data is obtained from databases maintained by parties outside Morgan Stanley. This data has been included for your information, and has not been verified by Morgan Stanley in any way. See "Sources of Information" below. The gross performance shown in this report for these managers could differ materially from their gross performance in investment advisory programs offered by firms other than Morgan Stanley. If you have invested with any such manager through another firm, we recommend that you seek information from that firm on the manager's gross and net performance in its programs.

# Important Notes About This Report (Cont'd)

---

**SOURCE OF PERFORMANCE INFORMATION FOR FUNDS:** For any fund shown in this report, the performance data is obtained from databases maintained by parties outside Morgan Stanley. This data has been included for your information, and has not been verified by Morgan Stanley in any way. See “Sources of Information” below.

**BENCHMARK INDICES:** Depending on the composition of your account and your investment objectives, the indices shown in this report may not be appropriate measures for comparison purposes and are therefore presented for illustration only. The indices used in this report may not be the same indices used for comparative purposes in the profile for each investment manager, mutual fund and/or ETF that accompanies this report. Indices are unmanaged. They do not reflect any management, custody, transaction or other expenses, and generally assume reinvestment of dividends, accrued income and capital gains. Performance of selected indices may be more or less volatile than that of any investment manager/fund shown in this report. Past performance of indices does not guarantee future results. You cannot invest directly in an index.

**MANAGERS AND FUNDS APPROVED IN MORGAN STANLEY WEALTH MANAGEMENT PROGRAMS:** Morgan Stanley Wealth Management approves certain managers and funds offered in its investment advisory programs:

- Morgan Stanley Wealth Management's Global Investment Manager Analysis (“GIMA”) team approves managers and funds offered in Consulting and Evaluation Services and Select UMA.
- Managers and funds offered in Institutional Consulting Group and Graystone Consulting programs may be approved by GIMA, approved by Morgan Stanley Wealth Management using another process, or not approved by Morgan Stanley Wealth Management.
- Morgan Stanley Wealth Management does not approve managers in the Investment Management Services consulting program.

# Important Notes About This Report (Cont'd)

---

If you invest in a manager or fund that is not approved by Morgan Stanley Wealth Management, you are responsible for selecting and/or retaining that manager or fund, and Morgan Stanley Wealth Management does not recommend or monitor that manager or fund. For more information on the approval process in any program, see the applicable ADV brochure, available at [www.MorganStanley.com/ADV](http://www.MorganStanley.com/ADV) or from your Financial Advisor or Private Wealth Advisor. If you have any questions about whether or how Morgan Stanley Wealth Management has approved a manager or fund shown in this report, please ask our Financial Advisor or Private Wealth Advisor.

**SHARE CLASSES OF FUNDS SHOWN IN THIS REPORT:** The share class of a fund shown in this report may differ from the share class available in any Morgan Stanley Wealth Management investment advisory program in which you invest. The performance of the share class in which you invest may differ from that of the share class shown in this report.

**REINVESTMENT:** The performance results shown in this report assume that all dividends, accrued income and capital gains were reinvested.

**SOURCES OF INFORMATION:** Although the statements of fact in this report have been obtained from, and are based on, sources that Morgan Stanley believes to be reliable, Morgan Stanley makes no representation as to the accuracy or completeness of the information from sources outside Morgan Stanley. Any such information may be incomplete and you should not use it as the sole basis for investment decisions.

***It is important to consider a fund's investment objectives, risks, charges and expenses carefully before investing. The prospectus contains this and other information about the fund. A copy of the prospectus may be obtained from your Financial Advisor or Private Wealth Advisor. Please read the prospectus carefully before investing in the fund.***

# Important Notes About This Report (Cont'd)

---

**KEY ASSET CLASS RISK CONSIDERATIONS:** Investing in securities entails risk including the risk of losing principal. There is no assurance that the investment disciplines and investment managers/funds selected will meet their intended objectives.

**Commodities – Diversified:** The commodities markets may fluctuate widely based on a variety of factors including changes in supply and demand relationships; governmental programs and policies; national and international political and economic events; war and terrorist events; changes in interest and exchange rates; trading activities in commodities and related contracts; pestilence; weather; technological change; and the price volatility of a commodity. In addition to commodity risk, commodity-linked notes may be subject to special risks, such as risk of loss of interest and principal, lack of a secondary market and risk of greater volatility that do not affect traditional equity and debt securities.

**Commodities - Precious Metals:** The prices of Commodities - Precious Metals tend to fluctuate widely and in an unpredictable manner, and have historically experienced extended periods of flat or declining prices. The prices of Commodities - Precious Metals are affected by several factors, including global supply and demand, investors' expectations with respect to the rate of inflation, currency exchange rates, interest rates, investment and trading activities of hedge funds and commodity funds, and global or regional political, economic or financial events and situations.

**Fixed Income:** Fixed income securities are subject to certain inherent risks such as credit risk, reinvestment risk, call risk, and interest rate risk. Fixed income securities are sensitive to changes in prevailing interest rates. When interest rates rise, the value of fixed income securities generally declines. Accordingly, managers or funds that invest in fixed income securities are subject to interest rate risk and portfolio values can decline in value as interest rates rise and an investor can lose principal.

**High Yield Fixed Income:** As well as being subject to risks relating to fixed income generally (see “Fixed Income”), high yield or “junk” bonds are considered speculative, have significantly higher credit and default risks (including loss of principal), and may be less liquid and more volatile than investment grade bonds. Clients should only invest in high yield strategies if this is consistent with their risk tolerance, and high yield investments should comprise only a limited part of a balanced portfolio.

# Important Notes About This Report (Cont'd)

---

**International/Emerging Market:** International investing (including investing in particular countries or groups of countries) should be considered only one component of a complete and diversified investment program. Investing in foreign markets may entail greater risks than those normally associated with domestic markets, such as foreign political, currency, economic and market risks. In addition, the securities markets of many emerging markets are substantially smaller, less developed, less liquid and more volatile than the securities markets of the U.S. and other more developed countries. Further, a portfolio that focuses on a single country may be subject to higher volatility than one that is more diversified.

**Preferred Securities:** Preferred securities are generally subject to the same risks as apply to fixed income securities. (See “Fixed Income.”) However, preferred securities (especially equity preferred securities) may rank below traditional forms of debt for the purposes of repayment in the event of bankruptcy. Many preferred securities are “callable” meaning that the issuer may retire the securities at specific prices and dates prior to maturity. If a preferred security is called, the investor bears the risk of reinvesting proceeds at a potentially lower return. Investors may not receive regular distributions on preferred securities. For example, dividends on equity preferred securities may only be declarable in the discretion of the issuer's board and may not be cumulative. Similarly, interest payments on certain debt preferred securities may be deferred by the issuer for periods of up to 10 years or more, in which case the investor would still have income tax liability even though payments would not have been received.

**Real Estate:** Real estate investments are subject to special risks, including interest rate and property value fluctuations as well as risks related to general and local conditions.

**Small and Mid Cap:** Investments in small-to medium-sized corporations are generally more vulnerable to financial risks and other risks than larger corporations and may involve a higher degree of price volatility than investments in the broad equity market.

**Hedged and Alternatives Strategies:** In most Consulting Group investment advisory program, alternative investments are limited to US registered open-end mutual funds, separate account strategies, and ETFs that seek to pursue alternative investment strategies or returns utilizing publicly traded securities. Investment products in this category may employ various investment strategies and techniques for both hedging and more speculative purposes such as short selling, leverage, derivatives, and options, which can increase volatility and the risk of investment loss. Alternative Investments are not suitable for all investors.



# Important Notes About This Report (Cont'd)

---

Managed Futures: Involve a high degree of risk, often involve leveraging and other speculative investment practices that may increase the risk of investment loss, can be highly illiquid, are not required to provide periodic pricing or valuation information to investors, may involve complex tax structures and delays in distributing important tax information, are not subject to the same regulatory requirements as mutual funds, often charge high fees which may offset any trading profits, and in many cases the underlying investments are not transparent and are known only to the investment manager.

Master Limited Partnerships (MLPs) are limited partnerships or limited liability companies whose interests (limited partnership or limited liability company units) are generally traded on securities exchanges like shares of common stock. Investment in MLPs entails different risks, including tax risks, than is the case for other types of investments. Currently, most MLPs operate in the energy, natural resources or real estate sectors and are subject to the risks generally applicable to companies in those sectors, including commodity pricing risk, supply and demand risk, depletion risk and exploration risk. Depending on the ownership vehicle, MLP interests are subject to varying tax treatment.

# Glossary

---

**ALPHA:** Synonym of 'value added', linearly similar to the way beta is computed, alpha is the incremental return on a portfolio when the market is stationary. In other words, it is the extra expected return due to non-market factors. This risk-adjusted measurement takes into account both the performance of the market as a whole and the volatility of the portfolio. A positive alpha indicates that a portfolio has produced returns above the expected level at that level of risk, and vice versa for a negative alpha.

**ANNUALIZED RETURN:** The constant rate of return that, compounded annually, would yield the same overall return for a period of more than one year as the actual return observed for that period.

**ANNUALIZED EXCESS RETURN:** Excess return represents the difference between the manager's return and the return of a benchmark for that manager. Annualized excess return is calculated by taking the annualized return of the original series and forming the difference between the two. A positive annualized excess return implies that the manager outperformed the benchmark over the time period shown.

**BEST AND WORST PERIOD RETURNS:** The best period return for a time window is simply the maximum of the returns for that period inside this window. Similarly, the worst period return for a time window is the minimum of the returns for that period inside this window. To calculate the best one-year return for a return series, the program moves a one-year time window along the series and calculates the compound return for each of these windows. The best one-year return is the maximum of the returns thus found. Similarly, the worst one-year return is the minimum of the returns thus found. Therefore, best and worst one-year returns do not refer to calendar years.

**BETA:** The measure of a portfolio's risk in relation to the market (for example, the S&P 500) or to an alternative benchmark or factors. Roughly speaking, a portfolio with a beta of 1.5 will have moved, on average, 1.5 times the market return. According to asset pricing theory, beta represents the type of risk, systematic risk, which cannot be diversified away. When using beta, there are a number of issues that you need to be aware of: (1) betas may change through time; (2) betas may be different depending on the direction of the market (i.e. betas may be greater for down moves in the market rather than up moves); (3) the estimated beta will be biased if the portfolio does not frequently trade; and (4) the beta is not necessarily a complete measure of risk (you may need multiple betas). Also, note that the beta is a measure of co movement, not volatility. It is possible for a security to have a zero beta and higher volatility than the market.

# Glossary (Cont'd)

---

**CORRELATION:** Statistical method to measure how closely related the variances of two series are. Assets that are highly correlated would be expected to react in similar ways to changing market conditions.

**CUMULATIVE RETURN:** The total return on an investment over a specified time period.

**CUMULATIVE EXCESS RETURN:** Excess return represents the difference between the manager's return and the return of a benchmark for that manager. Cumulative excess return is calculated by taking the cumulative return of the original series and forming the difference between the two. A positive cumulative excess return implies that the manager outperformed the benchmark over the time period shown.

**DOWNSIDE CAPTURE RATIO:** For each portfolio, this is calculated by (1) identifying the calendar quarters in which the portfolio's benchmark index had negative returns and then (2) for those quarters, dividing the portfolio's annualized net performance by the benchmark index's performance. For investors, the lower the downside capture ratio, the better. For example, a downside capture ratio of 90% means that the portfolio's losses were only 90% of the market's losses (as represented by the benchmark index).

**DOWNSIDE DEVIATION:** Similar to Standard Deviation, but Downside Deviation captures the range of expected returns only on the down side [when the returns fall below the minimum acceptable return (MAR)].

**DRAWDOWN (MAXIMUM DRAWDOWN):** The Maximum loss (compounded, not annualized) that the manager incurred during any sub-period of the time period shown.

**DRAWDOWN BEGIN DATE:** the first date of the sub-period used to calculate the maximum drawdown

**DRAWDOWN END DATE:** The last date of the sub period used to calculate the maximum drawdown

**DRAWDOWN LENGTH:** The number of periods (months or quarters depending on the periodicity of the data) the sub-period used to calculate the maximum drawdown

**DRAWDOWN RECOVERY DATE:** Date at which the compounded returns regain the peak level that was reached before the drawdown began

**DRAWDOWN RECOVERY LENGTH:** Number of periods it takes to reach the recovery level from maximum drawdown end date

# Glossary (Cont'd)

---

**EXCESS RETURN:** The difference between the returns of two portfolios. Usually excess return is the difference between a portfolio's return and the return of a benchmark for that portfolio.

**GAIN TO LOSS RATIO:** Divides the average gain in an up period by the average loss in a down period. A higher Gain to Loss Ratio is more favorable.

**HIGH WATER MARK:** The High Water Mark represents the peak level of the manager's return, as represented by the peak of the cumulative return series.

**HIGH WATER MARK DATE:** The date which the High Water Mark was reached.

**UNDER WATER LOSS:** Loss incurred between the high water mark date and the end of the period analyzed

**UNDER WATER LENGTH:** Length of the time interval that begins with the high water mark and ends with the analysis period

**TO HIGH WATER MARK:** The percentage of gain that the manager/fund needs to regain the peak level of the cumulative return series

**INFORMATION RATIO:** Measures the active return of the manager divided by the manager's active risk. Active return is the annualized differences of the manager and the benchmark index, while active risk is measured by tracking error. The higher the information ratio, the better. An information ratio of 0 implies that a manager/fund (or benchmark index, if applicable) has provided a return that is equivalent to the risk of the benchmark return.

**MAR:** Stands for "Minimum Acceptable Return." This represents the lowest return possible that could be considered a successful result of the investment. In most cases, the MAR will either be defined as 0 (meaning no negative return) or as the return of a cash benchmark (meaning the investment had a higher return than simply keeping the investment amount in the relatively safe investment of money market funds). Please refer to the specific chart/statistic to see the specific MAR used in the illustration.

# Glossary (Cont'd)

---

**MANAGER STYLE (RETURNS BASED STYLE ANALYSIS):** A measure for analyzing the style of a portfolio's returns when compared with the quarterly returns on a number of selected style indices (the "Style Basis"). These style indices represent distinct investment styles or asset classes such as large cap value, large cap growth, small cap growth, small cap value, government bonds, or cash equivalents asset classes. Style analysis uses a calculation procedure that finds the combination of selected indices that best tracks (i.e. that has the highest correlation to) a given manager's return series. This allows the advisor to capture an accurate picture of the investment style of the manager without viewing the underlying holdings.

**OMEGA:** A measure of volatility designed to capture the entire return distribution (useful for investments that do not have normal return distributions), the Omega is tied to a MAR (see above) and shows the ratio of the entire upside performance to the entire downside, with the MAR representing the dividing line between upside and downside. (e.g. If MAR = 0.00%, any positive return is captured in the upside and any negative return is captured in the downside).

**PAIN INDEX:** Represents the frequency, the depth, and the width of the manager/fund's drawdowns. The Pain Index captures the information for every period in which the manager/fund is negative. A higher Pain Index indicates that the manager/fund had a more negative result when considering not just the depth (lowest return) but also the frequency of negative returns (frequency) and the amount of time that the return remained negative (width).

**PAIN RATIO:** A risk/return ratio which uses the Pain Index as the measure of risk. The higher the Pain Ratio, the better the risk-adjusted return of the portfolio.

**ROLLING WINDOW:** Indicates that the chart or statistic was evaluated using periodic smaller windows of data on a rolling basis. As an example, a 20 Quarter Rolling Window (Annual Roll) over a 10 year period indicates that 5 year (20 quarter) periods of time were evaluated from the start date, moving forward one year at a time, for the duration of the 10 year period, resulting in 5 "windows". Evaluating data this way allows us to remove end point bias and determine a measure of consistency in performance.

**R-SQUARED:** Used to show how much of a portfolio's variability can be accounted for by the market. For example, if a portfolio's R-Squared is 0.79, then 79% of the portfolio's variability is due to market conditions. As R-Squared approaches 100%, the portfolio is more closely correlated with the market.

# Glossary (Cont'd)

---

**SHARPE RATIO:** Developed by William F. Sharpe, this calculation measures a ratio of return to volatility. It is useful in comparing two portfolios or stocks in terms of risk-adjusted return. The higher the Sharpe Ratio, the better the risk-adjusted return of the portfolio. It is calculated by first subtracting the risk free rate (Citigroup 3-month T-bill) from the return of the portfolio, then dividing by the standard deviation of the portfolio. Using Sharpe ratios to compare and select among investment alternatives can be difficult because the measure of risk (standard deviation) penalizes portfolios for positive upside returns as much as the undesirable downside returns.

**SINGLE COMPUTATION:** For a single computation chart, StyleADVISOR calculates the information over the entire time period shown as a single data point. AS an example, in a chart showing 10 years of performance, a “Single Computation” would represent the statistic shown over the entire 10 year window.

**STANDARD DEVIATION:** A statistical measure of the degree to which the performance of a portfolio varies from its average performance during a specified period. The higher the standard deviation, the greater the volatility of the portfolio’s performance returns relative to its average return. A portfolio’s returns can be expected to fall within plus or minus one standard deviation, relative to its average return, two-thirds of the time, and fall within plus or minus two standard deviations relative to its average return, 95% of the time. For example, if a portfolio had a return of 5% and a standard deviation of 13% then, if future volatility of returns is similar to historical volatility (which may not be the case):

- About two-thirds of the time, the future returns could be expected to fall between -8% and 18% (being 5% +/- 13%)
- About 95% of the time, the future returns could be expected to fall between -21% and 31% (being 5% +/- 26%).

In performance measurement, it is generally assumed that a larger standard deviation means that great risk was taken to achieve the return.

# Glossary (Cont'd)

---

**STYLE BASIS:** A set of indices that represent the broad asset category being utilized. The Style Basis is used in the equation that calculates the Manager Style (see definition). The “Manager Style” chart shows the specific benchmarks utilized in the Style Basis. The following Style Bases would be appropriate for the asset classes shown below:

- Domestic Equity: Russell Generic Corners; Russell 6 Way Style basis; S&P Pure Style Basis
- International Equity: MSCI Regional Style Basis; MSCI World Ex USA Style Basis; MSCI International Equity Style Basis; S&P Regional International Indexes, S&P International 4 Way Style Basis
- Global Equity: MSCI World Style Basis; MSCI World Regional Indexes; MSCI Global Equity Style Basis
- Fixed income: Citigroup Corporate Bond Indexes; BofA Merrill Lynch Fixed Income Indexes; Citigroup Govt Fixed Income Indexes; Global Bond Indexes

**STYLE BENCHMARK:** A unique benchmark calculated for each manager/fund based on the Returns Based Style Analysis described above. The “Asset Allocation” chart in Zephyr shows the specific weightings used for the Style Benchmark for each manager or fund.

**TRACKING ERROR:** A measurement that indicates the standard deviation of the difference between a selected market index and a portfolio's returns. The portfolio's returns are then compared to the index's returns to determine the amount of excess return, which produces a tracking error. A low tracking error indicates that the portfolio is tracking the selected index closely or has roughly the same returns as the index.

**UPSIDE CAPTURE RATIO:** For each portfolio, this is calculated by (1) identifying the calendar quarters in which the portfolio's benchmark index had positive returns and then (2) for those quarters, dividing the portfolio's annualized net performance by the benchmark index's performance. A percentage less than 100% indicates that the portfolio “captured” less performance than the benchmark index, while a percentage greater than 100% indicates the portfolio captured more performance than the benchmark index. For investors, the higher the upside capture ratio, the better. For example, if the annualized performance of an benchmark index during “up” markets (when its returns were zero or positive) is 20.8% and the portfolio's annualized performance during the same period is 16.8%, then the portfolio's upside capture ratio is  $16.8\%/20.8\% = 80.7\%$ , meaning the portfolio “captured” 80.7% of the upside performance of the index. Stated another way, the portfolio in this example performed almost 20% worse than the market during up periods.

**VARIANCE:** A measure of how spread out a distribution is. It is computed as the average squared deviation of each number from its mean.

# Performance Appendix

Performance Data below is net of fees. Please see the Morgan Stanley Smith Barney LLC Form ADV Part 2 Brochure for advisory accounts and/or any applicable brokerage account trade confirmation statements for a full disclosure of the applicable charges, fees and expenses. Your Financial Advisor will provide those documents to you upon request.

Account Name	QTD	YTD	1 Year	3 Years	5 Years	10 Years	Since Inception	Inception Date
Ares - Private Real Estate	-0.86	-3.68	-3.39	--	--	--	--	04/22/2022
Blackstone - Multi-Strategy	2.34	4.48	6.71	--	--	--	2.68	05/25/2022
Cohen & Steers - Global Infrastructure	-9.13	-8.41	-0.13	--	--	--	-9.75	05/27/2022
Israel Bonds	0.00	--	--	--	--	--	0.00	03/31/2023
R&D - Cash	0.62	2.72	3.55	0.01	--	--	-0.56	04/30/2020
Vanguard - Growth Index Fund	-3.64	28.36	28.18	--	--	--	0.82	05/28/2021
Vanguard - Mid Cap Growth Index Fund	-5.28	8.86	15.06	--	--	--	-5.08	05/28/2021
Vanguard - Mid Cap Value Index Fund	-4.85	-1.57	10.33	--	--	--	-1.87	05/28/2021
Vanguard - Short-Term Bond Index	0.14	--	--	--	--	--	1.40	02/28/2023
Vanguard - Small Cap Growth Index Fund	-6.59	7.33	10.57	--	--	--	-9.57	05/28/2021
Vanguard - Small Cap Value Index Fund	-3.07	2.08	13.93	--	--	--	-1.92	05/28/2021
Vanguard - Total Bond Market Index Fund	-3.09	-1.65	-0.01	--	--	--	-6.08	05/28/2021
Vanguard - Total International Stock Index Fund	-4.02	5.04	20.46	--	--	--	-5.74	05/28/2021
Vanguard - Value Index Fund	-2.37	0.11	14.79	--	--	--	1.63	05/28/2021

All performance above are Time Weighted(TWR) performance



## Information Disclosures

*Performance results are annualized for time periods greater than one year and include all cash and cash equivalents, realized and unrealized capital gains and losses, and dividends, interest and income. The investment results depicted herein represent historical performance. As a result of recent market activity, current performance may vary from the figures shown. Past performance is not a guarantee of future results.*

*Please see the Morgan Stanley Smith Barney LLC Form ADV Part 2 Brochure for advisory accounts and/or any applicable brokerage account trade confirmation statements for a full disclosure of the applicable charges, fees and expenses. Your Financial Advisor will provide those documents to you upon request.*

**Benchmark indices and blends included in this material are for informational purposes only, are provided solely as a comparison tool and may not reflect the underlying composition and/or investment objective(s) associated with the account(s). Indices are unmanaged and not available for direct investment. Index returns do not take into account fees or other charges. Such fees and charges would reduce performance. Composites are the aggregate of multiple portfolios within an asset pool.**

*The performance data shown reflects past performance, which does not guarantee future results. Investment return and principal will fluctuate so that an investor's shares when redeemed may be worth more or less than original cost. Please note, current performance may be higher or lower than the performance data shown. For up to date month-end performance information, please contact your Financial Advisor or visit the funds' company website.*

*Investors should carefully consider the fund's investment objectives, risks, charges and expenses before investing. The prospectus and, if available the summary prospectus, contains this and other information that should be read carefully before investing. Investors should review the information in the prospectus carefully. To obtain a prospectus, please contact your Financial Advisor or visit the funds' company website*

Investing involves market risk, including possible loss of principal. **Growth investing** does not guarantee a profit or eliminate risk. The stocks of these companies can have relatively high valuations. Because of these high valuations, an investment in a growth stock can be more risky than an investment in a company with more modest growth expectations. **Value investing** involves the risk that the market may not recognize that securities are undervalued and they may not appreciate as anticipated. **Small and mid-capitalization companies** may lack the financial resources, product diversification and competitive strengths of larger companies. The securities of small capitalization companies may not trade as readily as, and be subject to higher volatility than those of larger, more established companies. **Bond funds** and bond holdings have the same interest rate, inflation and credit risks that are associated with the underlying bonds owned by the funds. The return of principal in bond funds, and in funds with significant bond holdings, is not guaranteed. **International securities'** prices may carry additional risks, including foreign economic, political, monetary and/or legal factors, changing currency exchange rates, foreign taxes and differences in financial and accounting standards. International investing may not be for everyone. These risks may be magnified in emerging markets.

**Master Limited Partnerships (MLPs)** are limited partnerships or limited liability companies that are taxed as partnerships and whose interests (limited partnership units or limited liability company units) are traded on securities exchanges like shares of common stock. Currently, most MLPs operate in the energy, natural resources or real estate sectors. Investments in MLP interests are subject to the risks generally applicable to companies in the energy and natural resources sectors, including commodity pricing risk, supply and demand risk, depletion risk and exploration risk; and MLP interests in the real estate sector are subject to special risks, including interest rate and property value fluctuations, as well as risks related to general and economic conditions.

Because of their narrow focus, MLPs maintain exposure to price volatility of commodities and/or

underlying assets and tend to be more volatile than investments that diversify across many sectors and companies. MLPs are also subject to additional risks including: investors having limited control and rights to vote on matters affecting the MLP, limited access to capital, cash flow risk, lack of liquidity, dilution risk, conflict of interests, and limited call rights related to acquisitions.

**Mortgage backed securities** also involve prepayment risk, in that faster or slower prepayments than expected on underlying mortgage loans can dramatically alter the yield-to-maturity of a mortgage-backed security and prepayment risk includes the possibility that a fund may invest the proceeds at generally lower interest rates.

**Tax managed funds** may not meet their objective of being tax-efficient.

**Real estate** investments are subject to special risks, including interest rate and property value fluctuations, as well as risks related to general and economic conditions. **High yield** fixed income securities, also known as "junk bonds", are considered speculative, involve greater risk of default and tend to be more volatile than investment grade fixed income securities.

Credit quality is a measure of a bond issuer's creditworthiness, or ability to repay interest and principal to bondholders in a timely manner. The credit ratings shown are based on security rating as provided by Standard & Poor's, Moody's and/or Fitch, as applicable. Credit ratings are issued by the rating agencies for the underlying securities in the fund and not the fund itself, and the credit quality of the securities in the fund does not represent the stability or safety of the fund. Credit ratings shown range from AAA, being the highest, to D, being the lowest based on S&P and Fitch's classification (the equivalent of Aaa and C, respectively, by Moody's). Ratings of BBB or higher by S&P and Fitch (Baa or higher by Moody's) are considered to be investment grade-quality securities. If two or more of the agencies have assigned different ratings to a security, the highest rating is applied. Securities that are not rated by all three agencies are listed as "NR".

"**Alpha tilt strategies** comprise a core holding of stocks that mimic a benchmark type index such as the S&P 500 to which additional securities are added to help tilt the fund toward potentially outperforming the market in an effort to enhance overall investment returns. Tilt strategies are subject to significant timing risk and could potentially expose investors to extended periods of underperformance."

**Custom Account Index:** The Custom Account Index is an investment benchmark based on your historical target allocations and/or manager selection that you may use to evaluate the performance of your account. The Custom Account index does take into consideration certain changes that may have occurred in your portfolio since the inception of your account, i.e., asset class and/or manager changes. However, in some circumstances, it may not be an appropriate benchmark for use with your specific account composition. For detailed report of the historical composition of this blend please contact your Financial Advisor.

## Peer Groups

Peer Groups are a collection of similar investment strategies that essentially group investment products that share the same investment approach. Peer Groups are used for comparison purposes to compare and illustrate a client's investment portfolio versus its peer across various quantitative metrics like performance and risk. Peer Group comparison is conceptually another form of benchmark comparison whereby the actual investment can be ranked versus its peer across various quantitative metrics.

All Peer Group data are provided by Investment Metrics, LLC.

The URL below provides all the definitions and methodology about the various Peer Groups

<https://www.invmetrics.com/style-peer-groups>

## Peer Group Ranking Methodology

A percentile rank denotes the value of a product in which a certain percent of observations fall within a peer group. The range of percentile rankings is between 1 and 100, where 1 represents a high statistical value and 100 represents a low statistical value.

The 30th percentile, for example, is the value in which 30% of the highest observations may be found, the 65th percentile is the value in which 65% of the highest observations may be found, and so on.

Percentile rankings are calculated based on a normalized distribution ranging from 1 to 100 for all products in each peer group, where a ranking of 1 denotes a high statistical value and a ranking of 100 denotes a low statistical value. It is important to note that the same ranking methodology applies to all statistics, implying that a ranking of 1 will always mean highest value across all statistics.

For example, consider a risk/return assessment using standard deviation as a measure of risk. A percentile ranking equal to 1 for return denotes highest return, whereas a percentile ranking of 1 for standard deviation denotes highest risk among peers.

In addition, values may be used to demonstrate quartile rankings. For example, the third quartile is also known as the 75th percentile, and the median is the 50th percentile.

## Money Market Funds

You could lose money in Money Market Funds. Although MMF's classified as government funds (i.e. MMFs that invest 99.5% of total assets in cash and or securities backed by the US government) and retail funds (i.e. MMFs open to natural person investors only) seek to preserve value at \$1.00 per share, they cannot guarantee they will do so. The price of other MMFs will fluctuate and when you sell shares they may be worth more or less than originally paid. MMFs may impose a fee upon sale or temporarily suspend sales if liquidity falls below required minimums. During suspensions, shares would not be available for purchase, withdrawals, check writing or ATM debits. A MMF investment is not insured or guaranteed by the Federal Deposit Insurance Corporation or other government agency.

## Alternatives

This information is being provided as a service of your Graystone Institutional Consultant and does not supersede or replace your Morgan Stanley customer statement. The information is as of the date(s) noted and subject to daily market fluctuation. Your interests in Alternative Investments, which may have been purchased through us, are generally not held here, and are generally not covered by SIPC. The information provided to you: 1) is included as a service to you, valuations for certain products may not be available; 2) is derived from you or another external source for which we are not responsible, and may have been modified to take into consideration capital calls or distributions to the extent applicable; 3) may not reflect actual shares, share prices or values; 4) may include invested or distributed amounts in addition to a fair value estimate; and 5) should not be relied upon for tax reporting purposes.

Alternatives may be either traditional alternative investment vehicles or non-traditional alternative strategy vehicles. Traditional alternative investment vehicles may include, but are not limited to, Hedge Funds, Fund of Funds (both registered and unregistered), Exchange Funds, Private Equity Funds, Private Credit Funds, Real Estate Funds, and Managed Futures Funds. Non-traditional alternative strategy vehicles may include, but are not limited to, Open or Closed End Mutual Funds, Exchange-Traded and Closed-End Funds, Unit Investment Trusts, exchange listed Real Estate Investment Trusts (REITs), and Master Limited Partnerships (MLPs). These non-traditional alternative strategy vehicles also seek alternative-like exposure but have significant differences from traditional alternative investment vehicles. Non-traditional alternative strategy vehicles may behave like, have characteristics of, or employ various investment strategies and techniques for both hedging and more speculative purposes such as short-selling, leverage, derivatives, and options, which can increase volatility and the risk of investment loss. Characteristics such as correlation to

traditional markets, investment strategy, and market sector exposure can play a role in the classification of a traditional security being classified as alternative.

Traditional alternative investment vehicles are illiquid and usually are not valued daily. The estimated valuation provided will be as of the most recent date available and will be included in summaries of your assets. Such valuation may not be the most recent provided by the fund in which you are invested. No representation is made that the valuation is a market value or that the interest could be liquidated at this value. We are not required to take any action with respect to your investment unless valid instructions are received from you in a timely manner. Some positions reflected herein may not represent interests in the fund, but rather redemption proceeds withheld by the issuer pending final valuations which are not subject to the investment performance of the fund and may or may not accrue interest for the length of the withholding. Morgan Stanley does not engage in an independent valuation of your alternative investment assets. Morgan Stanley provides periodic information to you including the market value of an alternative investment vehicle based on information received from the management entity of the alternative investment vehicle or another service provider.

Traditional alternative investment vehicles often are speculative and include a high degree of risk. Investors should carefully review and consider potential risks before investing. Certain of these risks may include but are not limited to: • Loss of all or a substantial portion of the investment due to leveraging, short - selling, or other speculative practices; • Lack of liquidity in that there may be no secondary market for a fund; • Volatility of returns; • Restrictions on transferring interests in a fund; • Potential lack of diversification and resulting higher risk due to concentration of trading authority when a single advisor is utilized; • Absence of information regarding valuations and pricing; • Complex tax structures and delays in tax reporting; • Less regulation and higher fees than mutual funds; and • Risks associated with the operations, personnel, and processes of the manager. As a diversified global financial services firm, Morgan Stanley Wealth Management engages in a broad spectrum of activities including financial advisory services, investment management activities, sponsoring and managing private investment funds, engaging in broker-dealer transactions and principal securities, commodities and foreign exchange transactions, research publication, and other activities. In the ordinary course of its business, Morgan Stanley Wealth Management therefore engages in activities where Morgan Stanley Wealth Management's interests may conflict with the interests of its clients, including the private investment funds it manages. Morgan Stanley Wealth Management can give no assurance that conflicts of interest will be resolved in favor of its clients or any such fund.

**Indices** are unmanaged and investors cannot directly invest in them. Composite index results are shown for illustrative purposes and do not represent the performance of a specific investment. Diversification does not assure a profit or protect against loss in a declining market. Any performance or related information presented has not been adjusted to reflect the impact of the additional fees paid to a placement agent by an investor (for Morgan Stanley placement clients, a one-time upfront Placement Fee of up to 3%, and for Morgan Stanley investment advisory clients, an annual advisory fee of up to 2.5%), which would result in a substantial reduction in the returns if such fees were incorporated.

For most investment advisory clients, the program account will be charged an asset-based wrap fee every quarter ("the Fee"). In general, the Fee covers investment advisory services and reporting. In addition to the Fee, clients will pay the fees and expenses of any funds in which their account is invested. Fund fees and expenses are charged directly to the pool of assets the fund invests in and impact the valuations. Clients must understand that these fees and expenses are an additional cost and will not be included in the Fee amount in the account statements.

As fees are deducted quarterly, the compounding effect will be to increase the impact of the fees by an amount directly related to the gross account performance. For example, for an account with an initial value of \$100,000 and a 2.5% annual fee, if the gross performance is 5% per year over a three year period, the compounding effect of the fees will result in a net annual compound rate of return of approximately 2.40% per year over a three year period, and the total value of the client's portfolio at the end of the three year period would be approximately \$115,762.50 without the fees and \$107,372.63 with the fees. Please see the

applicable Morgan Stanley Smith Barney LLC Form ADV Part 2A for more information including a description of the fee schedule. It is available at [www.morganstanley.com/ADV](http://www.morganstanley.com/ADV) or from your Financial Advisor/Private Wealth Advisor.

Alternative investments involve complex tax structures, tax inefficient investing, and delays in distributing important tax information. Individual funds have specific risks related to their investment programs that will vary from fund to fund. Clients should consult their own tax and legal advisors as Morgan Stanley does not provide tax or legal advice. Interests in alternative investment products are offered pursuant to the terms of the applicable offering memorandum, are distributed by Morgan Stanley Smith Barney LLC and certain of its affiliates, and (1) are not FDIC-insured, (2) are not deposits or other obligations of Morgan Stanley or any of its affiliates, (3) are not guaranteed by Morgan Stanley and its affiliates, and (4) involve investment risks, including possible loss of principal. Morgan Stanley Smith Barney LLC is a registered broker-dealer, not a bank.

SIPC insurance does not apply to precious metals, other commodities, or traditional alternative investments.

© 2023 Morgan Stanley Smith Barney LLC. Member SIPC.

Graystone Consulting is a business of Morgan Stanley Smith Barney LLC. ("Morgan Stanley") This material is not to be reproduced or distributed to any other persons (other than professional advisors of the investors) and is intended solely for the use of the persons to whom it has been delivered. This material is not for distribution to the general public.

The sole purpose of this material is to inform, and it in no way is intended to be an offer or solicitation to purchase or sell any security, other investment or service, or to attract any funds or deposits. Investments mentioned may not be suitable for all clients. Any product discussed herein may be purchased only after a client has carefully reviewed the offering memorandum and executed the subscription documents. Morgan Stanley has not considered the actual or desired investment objectives, goals, strategies, guidelines, or factual circumstances of any investor in any fund(s). Before making any investment, each investor should carefully consider the risks associated with the investment, as discussed in the applicable offering memorandum, and make a determination based upon their own particular circumstances, that the investment is consistent with their investment objectives and risk tolerance. This information is being provided as a service of your Graystone Institutional Consultant and does not supersede or replace your Morgan Stanley customer statement. This information is as of the date(s) noted and subject to daily fluctuation.





September 20, 2023

CONFIDENTIAL

Mr. Rick Rivera  
Administrator  
Bal Harbour Employees' Retirement Plan

**Re: Benefit Calculation**

Dear Mr. Rivera:

We are enclosing the benefit notification form for the following Pension Plan participant:

**Vested Termination**  
**CARMENATY, RICHARD**

Please note that Mr. Carmenaty is eligible for a refund of his own contributions with interest in the amount of \$12,085.58. He would forfeit his rights to any future benefits should he exercise the refund option. A lump sum option is not presented because this option is not available to members hired after January 29, 1985 except for some limited situations.

If you have any questions, please do not hesitate to call.

Sincerely,

A handwritten signature in blue ink, appearing to read 'Piotr Krekora'.

Piotr Krekora, ASA, EA, MAAA  
Senior Consultant and Actuary

PK/kec

Enclosure

**BAL HARBOUR VILLAGE GENERAL EMPLOYEES' PENSION PLAN AND TRUST AGREEMENT**  
**Notification of Benefits Payable as a Result of Retirement**

**Participant's Name:** RICHARD CARMENATY

Your vested accrued monthly benefit according to the Plan is: \$ 68.65

This amount is payable each month as a ten-year certain and life annuity beginning on October 1, 2040, your Normal Retirement Date.

You have an option of receiving a refund of your own contributions with interest in lieu of your future benefits. Should you elect this option, you will forfeit any future rights to the benefit described above.

The amount of your accumulated contributions (including interest) as of October 1, 2023 is: \$ 12,085.58

If this amount is paid after October 31, 2023 an interest adjustment may need to be made.

The benefit amounts shown on this Notification were computed according to the Plan's normal annuity form. If you choose an optional form of annuity, the monthly benefit you receive will probably be less than the amounts listed in the first paragraph. The amount you receive under each option will be calculated when you apply for your benefit, that is, just prior to the date on which you wish your benefit to begin. You should refer to your Summary Plan Description for further details as to optional annuity forms, survivor benefits and other rights under the Plan.

The amounts above are based on the following information:

<b>Your Date of Birth:</b>	September 22, 1983	<b>Date of Employment:</b>	October 14, 2019
<b>Date of Termination:</b>	September 8, 2023	<b>Years of Credited Service:</b>	3.8333
<b>Average Monthly Earnings:</b>	\$5,969.39	<b>Vested Interest:</b>	10%

You should retain this Notification in your permanent records and make application for the monthly benefit prior to the date on which it is to commence. This Notification is non-negotiable, and the benefits under the Plan are not assignable, transferable, or subject to any encumbrance or pledge.

This calculation is subject to correction. If you are or become aware of errors in the data that was used, the calculations that were made, or the plan provisions that were applied, it is your responsibility to contact the plan administrator. The plan has the right to recover from you amounts that were paid to you in error.

**PENSION BOARD:** By \_\_\_\_\_ **Date:** \_\_\_\_\_

I accept the terms above and confirm the information shown above to be correct.

**PARTICIPANT'S SIGNATURE:** \_\_\_\_\_ **Date:** \_\_\_\_\_

**Calculation Date:** September 20, 2023



November 14, 2023

CONFIDENTIAL

Mr. Rick Rivera  
Administrator  
Bal Harbour Employees' Retirement Plan

**Re: Benefit Calculation**

Dear Mr. Rivera:

As requested, we are enclosing estimated benefit notification forms for the following Pension Plan participant:

**DROP Retirement**

**MOBLEY, LORI**

As requested, we prepared the estimates for the DROP entry date of December 1, 2023.

Please note that the compensation used for those calculations was estimated from data supplied by the Village personnel. Final calculations will reflect actual pay through Ms. Mobley's DROP entry date. Final calculations will also include joint & survivor annuity options if data is available.

If you have any questions, please do not hesitate to call. The Lump Sum option is not available to participants hired after January 29, 1985 if the amount exceeds \$5,000 and is also not available to participants entering the DROP.

Sincerely,  
Gabriel, Roeder, Smith & Company

A handwritten signature in blue ink, appearing to read "Piotr Krekora". The signature is fluid and cursive, written over a light blue circular stamp.

Piotr Krekora, ASA, EA, MAAA  
Senior Consultant and Actuary

PK/kec

Enclosure

This communication shall not be construed to provide tax advice, legal advice or investment advice.

**BAL HARBOUR VILLAGE GENERAL EMPLOYEES' PENSION PLAN AND TRUST AGREEMENT**  
**Notification of Benefits Payable as a Result of Participation**  
**in the Deferred Retirement Option Plan (DROP)**

Participant's Name: Lori Mobley

You are eligible for a Normal Retirement from The Plan. Your benefit is payable at the beginning of each month commencing on December 1, 2023. The amount of your monthly benefit depends on the optional form of annuity that you choose. Please initial the optional annuity form which you elect to receive from the list below:

- \_\_\_\_\_ 1. **LIFE ANNUITY:** This option provides monthly payments of \$1,769.05 to you as long as you live. No further payments will be made following your death.
- \_\_\_\_\_ 2. **TEN YEAR CERTAIN AND LIFE THEREAFTER ANNUITY:** This option provides monthly payments of \$1,703.26 to you as long as you live. If you should die before 120 monthly payments have been made, the same amount will continue to be paid to your beneficiary until a total of 120 monthly payments have been made.
- \_\_\_\_\_ 3. **100% JOINT AND LAST SURVIVOR ANNUITY:** This option provides monthly payments of \$ N/A to you as long as you live. Your designated beneficiary, if living at the time of your death, will then receive monthly payments of \$ N/A as long as he/she lives.
- \_\_\_\_\_ 4. **75% JOINT AND LAST SURVIVOR ANNUITY:** This option provides monthly payments of \$ N/A to you as long as you live. Your designated beneficiary, if living at the time of your death, will then receive monthly payments of \$ N/A as long as he/she lives.
- \_\_\_\_\_ 5. **66 2/3% JOINT AND LAST SURVIVOR ANNUITY:** This option provides monthly payments of \$ N/A to you as long as you live. Your designated beneficiary, if living at the time of your death, will then receive monthly payments of \$ N/A as long as he/she lives.
- \_\_\_\_\_ 6. **50% JOINT AND LAST SURVIVOR ANNUITY:** This option provides monthly payments of \$ N/A to you as long as you live. Your designated beneficiary, if living at the time of your death, will then receive monthly payments of \$ N/A as long as he/she lives.
- \_\_\_\_\_ 7. **LUMP SUM:** This option provides the member with a single payment of \$ N/A, based on the \_\_\_\_\_ PBGC discount rate.  
 (Note: this option is not available to DROP participants)

The amounts above are based on the following information:

<b>Your Date of Birth:</b>	November 10, 1966	<b>Date of Employment:</b>	October 24, 2011
<b>Benefit Commencement Date:</b>	December 1, 2023	<b>Date of Termination:</b>	November 30, 2023
<b>Average Monthly Earnings:</b>	\$ 4,698.10	<b>Years of Credited Service:</b>	12.0833
<b>Beneficiary Name:</b>	None Provided	<b>Date of Birth:</b>	N/A



<b>After-Tax Contributions:</b>	Not Available	
<b>Pre-Tax Contributions:</b>	Not Available	
<b>Interest on Contributions:</b>	Not Available	
<b>Accumulated Employee Contributions:</b>	Not Available	
<b>Nontaxable Portion of Monthly Benefit for Options 1 or 2:</b>	TBD	<b>Number of Months Nontaxable Portion Continues:</b> TBD
<b>Nontaxable Portion of Monthly Benefit for Options 3, 4, 5 or 6:</b>	TBD	<b>Number of Months Nontaxable Portion Continues:</b> TBD

The excludable amounts were computed on the basis of IRS "safe harbor" method. This new method (outlined in IRS notice 88-118, I.R.B. 1988-47, dated November 15, 1988) is explained in our summary dated November, 1988. Beginning November 17, 1996, there were regulation changes which are explained in our update dated October, 1996. New changes in effect January 1, 1998 for annuities paid over more than one lifetime were explained in the GRS bulletin dated January, 1998.

This calculation is subject to correction. If you are or become aware of errors in the data that was used, the calculations that were made, or the Plan provisions that were applied, it is your responsibility to contact the plan administrator. The Plan has the right to recover from you amounts that were paid to you in error.

The Survivor Annuity benefit amounts shown above are based on the beneficiary named above and are payable only to this beneficiary. Should you wish to change your beneficiary before your payments begin, new amounts will have to be calculated.

This calculation does not take into account the portion of your benefit payable in excess of the IRS 415 limit. This excess amount will have to be paid to you by the Village from a separate fund. The excess amount (the amount of the reduction) will be payable from the Excess Benefit Plan, so that the total between the two should equal the amount reflected on this estimate.

**BOARD OF TRUSTEES:** By \_\_\_\_\_ **DATE:** \_\_\_\_\_

I accept the terms above, including my choice of annuity form, and confirm the information shown above to be correct.

**PARTICIPANT'S SIGNATURE:** \_\_\_\_\_ **DATE:** \_\_\_\_\_

**Calculation Date:** November 14, 2023

**BAL HARBOUR VILLAGE GENERAL EMPLOYEES' PENSION PLAN AND TRUST AGREEMENT**  
**Illustration of the Account Balance as a Result of Participation**  
**in the Deferred Retirement Option Plan (DROP)**

Participant's Name: Lori Mobley

You are eligible for a Normal Retirement from The Plan. Your benefit is payable at the beginning of each month commencing on December 1, 2023. The amount of your monthly benefit depends on the optional form of annuity that you choose. The following form illustrates your DROP account balance after 3 and 5 years of participation in the program for each of the optional form of benefit payments.

During your participation in the DROP, your benefit payments will be deposited to your DROP account (not your bank account). Upon exiting the program, the accumulated balance (with interest) will be distributed to you and the monthly benefit will be directed to you.

Interest credited to your account will be based on your election. You can choose between fixed 4% interest and actual fund earnings. The following illustration is based on 4% interest earnings. Since the actual future earnings are unknown and subject to fluctuations, only the 4% interest election is illustrated.

- \_\_\_\_\_ 1. **LIFE ANNUITY:** This option provides monthly payments of \$1,769.05 to you as long as you live. No further payments will be made following your death.

DROP Account Balance After 3 Years*	69,348.32
DROP Account Balance After 5 Years*	123,226.18

- \_\_\_\_\_ 2. **TEN YEAR CERTAIN AND LIFE THEREAFTER ANNUITY:** This option provides monthly payments of \$1,703.26 to you as long as you live. If you should die before 120 monthly payments have been made, the same amount will continue to be paid to your beneficiary until a total of 120 monthly payments have been made.

DROP Account Balance After 3 Years*	66,769.38
DROP Account Balance After 5 Years*	118,643.62

- \_\_\_\_\_ 3. **100% JOINT AND LAST SURVIVOR ANNUITY:** This option provides monthly payments of \$ N/A to you as long as you live. Your designated beneficiary, if living at the time of your death, will then receive monthly payments of \$ N/A as long as he/she lives.

DROP Account Balance After 3 Years*	-
DROP Account Balance After 5 Years*	-

- \_\_\_\_\_ 4. **75% JOINT AND LAST SURVIVOR ANNUITY:** This option provides monthly payments of \$ N/A to you as long as you live. Your designated beneficiary, if living at the time of your death, will then receive monthly payments of \$ N/A as long as he/she lives.

DROP Account Balance After 3 Years*	-
DROP Account Balance After 5 Years*	-

- \_\_\_\_\_ 5. **66 2/3% JOINT AND LAST SURVIVOR ANNUITY:** This option provides monthly payments of \$ N/A to you as long as you live. Your designated beneficiary, if living at the time of your death, will then receive monthly payments of \$ N/A as long as he/she lives.

DROP Account Balance After 3 Years*	-
DROP Account Balance After 5 Years*	-

- \_\_\_\_\_ 6. **50% JOINT AND LAST SURVIVOR ANNUITY:** This option provides monthly payments of \$ N/A to you as long as you live. Your designated beneficiary, if living at the time of your death, will then receive monthly payments of \$ N/A as long as he/she lives.

DROP Account Balance After 3 Years*	-
DROP Account Balance After 5 Years*	-

\* The above figures are mere estimates. Since the interest is credited quarterly, small differences may occur if retirement does not coincide with the end of the quarter.